

Product datasheet for PH310312

CNDP1 (NM_032649) Human Mass Spec Standard

Product data:

Product Type:	Mass Spec Standards
Description:	CNDP1 MS Standard C13 and N15-labeled recombinant protein (NP_116038)
Species:	Human
Expression Host:	HEK293
Expression cDNA Clone or AA Sequence:	RC210312
Predicted MW:	56.8 kDa
Protein Sequence:	>RC210312 protein sequence Red=Cloning site Green=Tags(s)

MDPKLGRMAASLLAVLLLLLLERGMFSSPSPPALLEKVFQYIDLHQDEFVQTLKEWVAIESDSVQPVPR
FRQELFRMMAVAADTLQRLGARVASVDMGPQQLPDGQSLPIPPVILAELGSDPTKGTVCFYGHLDVQPAD
RGDGWLTDPYVLTEVDGKLYGRGATDNKGPVLAWINAVSAFRALEQDLPVNIKFIIEGMEEAGSVALEEL
VEKEKDRFFSGVDYIVISDNLWISQRKPAITYGTRGNSYFMVEVKCRDQDFHSGTFGGILNEPMADLVAL
LGSLVDSSGHILVPGIYDEVVPLTEEEINTYKAIHLDLEEYRNSSRVEKFLFDTKEEILMHLWRYPVLSI
HGIEGAFDEPGTKTVIPGRVIGKFSIRLVPHMNVSAVEKQVTRHLEDVFSKRNSSNKMVVSMTLGLHPWI
ANIDDTQYLAAKRAIRTVFGTEPDMIRDGSTIPIAKMFQEVVHKSVVLLIPLGAVDDGEHSQNEKINRWNY
IEGTKLFAAFFLEMAQLH

TRTRPLEQKLISEEDLAANDILDYKDDDDKV

Tag:	C-Myc/DDK
Purity:	> 80% as determined by SDS-PAGE and Coomassie blue staining
Concentration:	>0.05 µg/µL as determined by microplate BCA method
Labeling Method:	Labeled with [U- 13C6, 15N4]-L-Arginine and [U- 13C6, 15N2]-L-Lysine
Buffer:	25 mM Tris-HCl, 100 mM glycine, pH 7.3
Storage:	Store at -80°C. Avoid repeated freeze-thaw cycles.
Stability:	Stable for 3 months from receipt of products under proper storage and handling conditions.
RefSeq:	NP_116038
RefSeq Size:	2211
RefSeq ORF:	1524



[View online »](#)

Synonyms: CN1; CPGL2; HsT2308

Locus ID: 84735

UniProt ID: [Q96KN2](#)

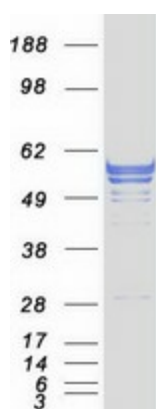
Cytogenetics: 18q22.3

Summary: This gene encodes a member of the M20 metalloprotease family. The encoded protein is specifically expressed in the brain, is a homodimeric dipeptidase which was identified as human carnosinase. This gene contains trinucleotide (CTG) repeat length polymorphism in the coding region. [provided by RefSeq, Jul 2008]

Protein Families: Protease, Secreted Protein

Protein Pathways: beta-Alanine metabolism, Histidine metabolism, Metabolic pathways

Product images:



Coomassie blue staining of purified CNDP1 protein (Cat# [TP310312]). The protein was produced from HEK293T cells transfected with CNDP1 cDNA clone (Cat# [RC210312]) using MegaTran 2.0 (Cat# [TT210002]).