

Product datasheet for PH310294

SHARP2 (BHLHE40) (NM_003670) Human Mass Spec Standard

Product data:

Product Type:	Mass Spec Standards
Description:	BHLHE40 MS Standard C13 and N15-labeled recombinant protein (NP_003661)
Species:	Human
Expression Host:	HEK293
Expression cDNA Clone or AA Sequence:	RC210294
Predicted MW:	45.5 kDa
Protein Sequence:	>RC210294 protein sequence Red=Cloning site Green=Tags(s) MERIPSAQPPACLPKAPGLEHGDLPMPAHMYQVYKSRRGIKRSEDSKETYKLPHRLIEKRRDRINE CIAQLKDLLPEHLKLTTLGHLEKAVVLELTLKHVKALTNLIDQQQKIIALQSGLQAGELSGRNVETGQE MFCSGFQTCAREVLQYLAKHENTRDLKSSQLVTHLHRVSELLQGGTSRKPSDPAPKVMDFKEKPSSPAK GSEGPKNCPVVIQRTFAHSSGEQSGSDTDTDSGYGGESEKGLRSEQPCFKSDHGRRFTMGERIGAIIKQ ESEEPTTKKRMQLSDDEGHFTSSDLISSPFLGPHPHQPPFCLPFYLIPPSATAYLPMLEKCWYPTSPV LYPGLNASAAALSSFMPDKISAPLLMPQRLPSPLPAHPSVDSSVLLQALKPIPLNLETKD TRTRPLEQKLISEEDLAANDILDYKDDDDKV
Tag:	C-Myc/DDK
Purity:	> 80% as determined by SDS-PAGE and Coomassie blue staining
Concentration:	>0.05 µg/µL as determined by microplate BCA method
Labeling Method:	Labeled with [U- ¹³ C ₆ , ¹⁵ N ₄]-L-Arginine and [U- ¹³ C ₆ , ¹⁵ N ₂]-L-Lysine
Buffer:	25 mM Tris-HCl, 100 mM glycine, pH 7.3
Storage:	Store at -80°C. Avoid repeated freeze-thaw cycles.
Stability:	Stable for 3 months from receipt of products under proper storage and handling conditions.
RefSeq:	NP_003661
RefSeq Size:	3061
RefSeq ORF:	1236
Synonyms:	BHLHB2; Clast5; DEC1; HLHB2; SHARP-2; SHARP2; STRA13; Stra14
Locus ID:	8553



[View online »](#)

UniProt ID: [O14503](#), [Q6IB83](#)

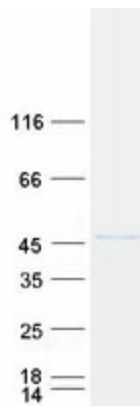
Cytogenetics: 3p26.1

Summary: This gene encodes a basic helix-loop-helix protein expressed in various tissues. The encoded protein can interact with ARNTL or compete for E-box binding sites in the promoter of PER1 and repress CLOCK/ARNTL's transactivation of PER1. This gene is believed to be involved in the control of circadian rhythm and cell differentiation. [provided by RefSeq, Feb 2014]

Protein Families: Transcription Factors

Protein Pathways: Circadian rhythm - mammal

Product images:



Coomassie blue staining of purified BHLHE40 protein (Cat# [TP310294]). The protein was produced from HEK293T cells transfected with BHLHE40 cDNA clone (Cat# [RC210294]) using MegaTran 2.0 (Cat# [TT210002]).