

Product datasheet for PH310286

ARL4C (NM_005737) Human Mass Spec Standard

Product data:

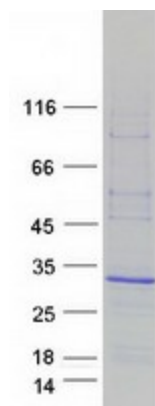
Product Type:	Mass Spec Standards
Description:	ARL4C MS Standard C13 and N15-labeled recombinant protein (NP_005728)
Species:	Human
Expression Host:	HEK293
Expression cDNA Clone or AA Sequence:	RC210286
Predicted MW:	21.5 kDa
Protein Sequence:	>RC210286 protein sequence Red=Cloning site Green=Tags(s) MGNISSNISAFQSLHIVMLGLDSAGKTTVLYRLKFNEFVNTVPTIGFNTEKIKLSNGTAKGISCHFWDVG GQEKLRPLWKSYSRCTDGIYVVDSDVDRLEEAKTELHKVTKFAENQGTPLLVIANKQDLPKSLPVAEI EKQLALHELIPATTYHVQPACAIIGEGLTEGMDKLYEMILKRRKSLKQKKKR TRTRPLEQKLISEEDLAANDILDYKDDDDKV
Tag:	C-Myc/DDK
Purity:	> 80% as determined by SDS-PAGE and Coomassie blue staining
Concentration:	>0.05 µg/µL as determined by microplate BCA method
Labeling Method:	Labeled with [U- 13C6, 15N4]-L-Arginine and [U- 13C6, 15N2]-L-Lysine
Buffer:	25 mM Tris-HCl, 100 mM glycine, pH 7.3
Storage:	Store at -80°C. Avoid repeated freeze-thaw cycles.
Stability:	Stable for 3 months from receipt of products under proper storage and handling conditions.
RefSeq:	<u>NP_005728</u>
RefSeq Size:	4024
RefSeq ORF:	576
Synonyms:	ARL7; LAK
Locus ID:	10123
UniProt ID:	<u>P56559</u> , <u>A0A024R4C5</u>


[View online »](#)

Cytogenetics: 2q37.1

Summary: ADP-ribosylation factor-like 4C is a member of the ADP-ribosylation factor family of GTP-binding proteins. ARL4C is closely similar to ARL4A and ARL4D and each has a nuclear localization signal and an unusually high guanine nucleotide exchange rate. This protein may play a role in cholesterol transport. [provided by RefSeq, Jul 2008]

Product images:



Coomassie blue staining of purified ARL4C protein (Cat# [TP310286]). The protein was produced from HEK293T cells transfected with ARL4C cDNA clone (Cat# [RC210286]) using MegaTran 2.0 (Cat# [TT210002]).