

Product datasheet for PH310279

MARK2 (NM_004954) Human Mass Spec Standard

Product data:

Product Type:	Mass Spec Standards
Description:	MARK2 MS Standard C13 and N15-labeled recombinant protein (NP_004945)
Species:	Human
Expression Host:	HEK293
Expression cDNA Clone or AA Sequence:	RC210279
Predicted MW:	81.2 kDa
Protein Sequence:	>RC210279 protein sequence Red=Cloning site Green=Tags(s)

MSSARTPLPTLNERDTEQPTLGHLDSPSSKSNMIRGRNSATSADEQPHIGNYRLKLTIGKGNFAKVLA
RHILTGKEVAVKIIDKTQLNSSLQKLFREVRIMKVLNHPNIVKLFVIEITEKTLVLMYASGGEVFDY
LVAHGRMKEKEARAKFRQIVSAVQYCHQKFIVHRDLKAENLLDADMNIKIADFGFSNEFTFGNKLDTFC
GSPPYAAPELFQGGKYDGPEDVWVSLGVILYTLVSGSLPFDGQNLKELRERVLRGKYRIPFYMSTDCENL
LKKFLILNPSKRGTLQIMKDRWMNVGHEDDELKPYVEPLPDYKDPRTLMVSMGYTREEIQDSL VGQR
YNEVMATYLLLGYSSELEGDTITLKPRPSADLTNSSAPSPSHKVQRSVSPANPKQRRFSDQAGPAIPTSN
SYSKKTQSNNAENKRPEEDRESGRKASSTAKVPASPLPGLERKKTTPTPSTNSVLSTSTNRSRNSPLLER
ASLGQASIQNGKDSTAPQRPVSPSAHNISSSGGAPDRTNFPRGVSSRSTFHAGQLRQVRDQQLPYGV
TPASPSGHSQRRGASGSIFSKFTSKFVRRNLNEPESKDRVETLRPHVVGSGGNDKEEFREAKPRSLR
FTWSMKTTSMEPNEMMREIRKVL DANSCQSELHEKYMLLCMHGTPGHEDFVQWEMEVCCLPRLSLNGVR
FKRISGTSMAFKNIASKIANELKL

TRTRPLEQKLI SEEDLAANDILDYKDDDDKV

Tag:	C-Myc/DDK
Purity:	> 80% as determined by SDS-PAGE and Coomassie blue staining
Concentration:	>0.05 µg/µL as determined by microplate BCA method
Labeling Method:	Labeled with [U- ¹³ C ₆ , ¹⁵ N ₄]-L-Arginine and [U- ¹³ C ₆ , ¹⁵ N ₂]-L-Lysine
Buffer:	25 mM Tris-HCl, 100 mM glycine, pH 7.3
Storage:	Store at -80°C. Avoid repeated freeze-thaw cycles.
Stability:	Stable for 3 months from receipt of products under proper storage and handling conditions.
RefSeq:	NP_004945



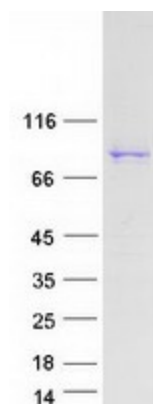
[View online »](#)

RefSeq Size:	4556
RefSeq ORF:	2172
Synonyms:	EMK-1; EMK1; PAR-1; Par-1b; Par1b
Locus ID:	2011
UniProt ID:	Q7KZ17
Cytogenetics:	11q13.1

Summary: This gene encodes a member of the Par-1 family of serine/threonine protein kinases. The protein is an important regulator of cell polarity in epithelial and neuronal cells, and also controls the stability of microtubules through phosphorylation and inactivation of several microtubule-associated proteins. The protein localizes to cell membranes. Multiple transcript variants encoding different isoforms have been found for this gene. [provided by RefSeq, Jul 2009]

Protein Families: Druggable Genome, Protein Kinase

Product images:



Coomassie blue staining of purified MARK2 protein (Cat# [TP310279]). The protein was produced from HEK293T cells transfected with MARK2 cDNA clone (Cat# [RC210279]) using MegaTran 2.0 (Cat# [TT210002]).