

Product datasheet for PH310272

WDR8 (WRAP73) (NM_017818) Human Mass Spec Standard

Product data:

Product Type:	Mass Spec Standards
Description:	WDR8 MS Standard C13 and N15-labeled recombinant protein (NP_060288)
Species:	Human
Expression Host:	HEK293
Expression cDNA Clone or AA Sequence:	RC210272
Predicted MW:	51.6 kDa
Protein Sequence:	>RC210272 protein sequence Red=Cloning site Green=Tags(s)

MNFSEVFKLSSLLCKFSPDGKYLASCVQYRLVVRDVNTLQILQLYTCLDQIQHIEWSADSLFILCAMYKR
GLVQVWSLEQPEWHCKIDEGSAGLVASCWSPDGRHILNTEFHLRITVWSLCTKSVSYIKYPKACLQGIT
FTRDGRYMALAERRDCKDYVSIFVCSQWQLLRHFDTDQDLTGIEWAPNGCVLAVWDTCLEYKILLYSLD
GRLLSTYSAYEWSLGIKSVAWSPSSQFLAVGSYDGKVRILNHVTWKMITFEGHPAAINDPKIVVYKEAEK
SPQLGLGCLSFPPPRAGAGPLPSSSESKYEIASVPVSLQTLKPVTDNANPKIGIGMLAFSPDSYFLATRND
NIPNAVWWDIQKRLRFVLEQLSPVRAFQWDPQQPRLAICTGGSRLYLWSPAGCMSVQVPEGDFAVLS
LCWHLSGDSMALLSKDHFCLCFLETEAVVGTACRQLGGHT

TRTRPLEQKLISEEDLAANDILDYKDDDDKV

Tag:	C-Myc/DDK
Purity:	> 80% as determined by SDS-PAGE and Coomassie blue staining
Concentration:	>0.05 µg/µL as determined by microplate BCA method
Labeling Method:	Labeled with [U- ¹³ C ₆ , ¹⁵ N ₄]-L-Arginine and [U- ¹³ C ₆ , ¹⁵ N ₂]-L-Lysine
Buffer:	25 mM Tris-HCl, 100 mM glycine, pH 7.3
Storage:	Store at -80°C. Avoid repeated freeze-thaw cycles.
Stability:	Stable for 3 months from receipt of products under proper storage and handling conditions.
RefSeq:	<u>NP_060288</u>
RefSeq Size:	1708
RefSeq ORF:	1380
Synonyms:	WDR8



[View online »](#)

Locus ID: 49856

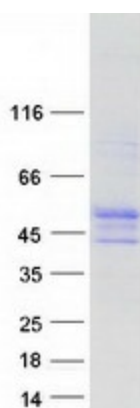
UniProt ID: [Q9P2S5](#), [A0A384MQZ3](#)

Cytogenetics: 1p36.32

Summary: This gene encodes a member of the WD repeat protein family. WD repeats are minimally conserved regions of approximately 40 amino acids typically bracketed by gly-his and trp-asp (GH-WD), which may facilitate formation of heterotrimeric or multiprotein complexes. Members of this family are involved in a variety of cellular processes, including cell cycle progression, signal transduction, apoptosis, and gene regulation. Studies of the related mouse protein suggest that the encoded protein may play a role in the process of ossification. [provided by RefSeq, Mar 2009]

Protein Families: Stem cell - Pluripotency

Product images:



Coomassie blue staining of purified WRAP73 protein (Cat# [TP310272]). The protein was produced from HEK293T cells transfected with WRAP73 cDNA clone (Cat# [RC210272]) using MegaTran 2.0 (Cat# [TT210002]).