

Product datasheet for PH310271

CAPS (NM_004058) Human Mass Spec Standard

Product data:

Product Type:	Mass Spec Standards
Description:	CAPS MS Standard C13 and N15-labeled recombinant protein (NP_004049)
Species:	Human
Expression Host:	HEK293
Expression cDNA Clone or AA Sequence:	RC210271
Predicted MW:	21 kDa
Protein Sequence:	>RC210271 protein sequence Red=Cloning site Green=Tags(s) MDAVDATMEKLRQAQLSRGASGIQGLARFFRQLDRDGSRSLEDADEFRQGLAKLGLVLDQAEAEGVCRKWD RNGSGTLDLEEFRLRALRPPMSQAREAVIAAFAKLDRSGDGVVTVDLDRGVYSGRAHPKVRSGEWTEDEV LRRFLDNFDSSEKDGQVTLAEFQDYYSGVASAMNTDEEFVAMMTSAWQL TRTRPLEQKLISEEDLAANDILDYKDDDDKV
Tag:	C-Myc/DDK
Purity:	> 80% as determined by SDS-PAGE and Coomassie blue staining
Concentration:	>0.05 µg/µL as determined by microplate BCA method
Labeling Method:	Labeled with [U- 13C6, 15N4]-L-Arginine and [U- 13C6, 15N2]-L-Lysine
Buffer:	25 mM Tris-HCl, 100 mM glycine, pH 7.3
Storage:	Store at -80°C. Avoid repeated freeze-thaw cycles.
Stability:	Stable for 3 months from receipt of products under proper storage and handling conditions.
RefSeq:	NP_004049
RefSeq Size:	1613
RefSeq ORF:	567
Synonyms:	CAPS1
Locus ID:	828
UniProt ID:	Q13938 , A0A384NYV7 , Q96ET4

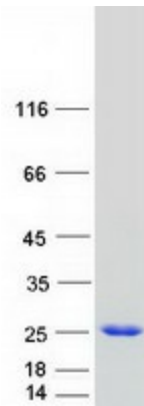


[View online »](#)

Cytogenetics: 19p13.3

Summary: This gene encodes a calcium-binding protein, which may play a role in the regulation of ion transport. A similar protein was first described as a potentially important regulatory protein in the dog thyroid and was termed as R2D5 antigen in rabbit. Alternative splicing of this gene generates two transcript variants. [provided by RefSeq, Jul 2008]

Product images:



Coomassie blue staining of purified CAPS protein (Cat# [TP310271]). The protein was produced from HEK293T cells transfected with CAPS cDNA clone (Cat# [RC210271]) using MegaTran 2.0 (Cat# [TT210002]).