

Product datasheet for PH310268

KLC4 (NM_201521) Human Mass Spec Standard

Product data:

Product Type:	Mass Spec Standards
Description:	KLC4 MS Standard C13 and N15-labeled recombinant protein (NP_958929)
Species:	Human
Expression Host:	HEK293
Expression cDNA Clone or AA Sequence:	RC210268
Predicted MW:	68.6 kDa
Protein Sequence:	>RC210268 protein sequence Red=Cloning site Green=Tags(s)

MSGLVLGQRDEPAGHRLSQEEILGSTRVLSQGLEALRSEHQAVLQSLSQTIIECLQQGGHEEGLVHEKARQ
LRRSMENIELGLSEAQVMLALASHLSTVESEKQKLRVRRRLCQENQWLRDELQAGTQQRLQRSEQAVAQ
EEEKHLFLGQLRQYDEGDGHTSEEKEGDATKDSLDDLPNEEEEDPSNGLSRQGATAAQGGYEIPAR
LRTLHNLVIQYAAQGRYEVAVPLCKQALEDLERTSGRGHPDVATMLNILALVYRDQNKYEAAHLLNDAL
SIRESTLGPDPHVAATLNNLAVLYGKRGKYKEAEPLCQRALEIREKVLGTNHPDVAKQLNLLALLCQNG
GKYEAVERYYYQALAIYEGQLGPDNPNVARTKNNLASCYLKQGYAEAEETLYKEILTRAHVQEFSGVDD
HKPIWMHAEEREEMSKSRHHEGGTPYAEYGGWYKACKVSSPTVNTTLRNLGALYRRQGLKLEAAETLEECA
LRSRRQGTDPISQTKVAELLGESDGRRTSQEGPGDSVKFEGGEDASVAVEWSGDGSGTLQRSGLGKIRD
VLRSSSELLVRKLQGTETPRPSSSNMKRAASLNLYLNQPSAAPLQVSRGLSASTMDLSSSS

TRTRPLEQKLISEEDLAANDILDYKDDDDKV

Tag:	C-Myc/DDK
Purity:	> 80% as determined by SDS-PAGE and Coomassie blue staining
Concentration:	>0.05 µg/µL as determined by microplate BCA method
Labeling Method:	Labeled with [U- 13C6, 15N4]-L-Arginine and [U- 13C6, 15N2]-L-Lysine
Buffer:	25 mM Tris-HCl, 100 mM glycine, pH 7.3
Storage:	Store at -80°C. Avoid repeated freeze-thaw cycles.
Stability:	Stable for 3 months from receipt of products under proper storage and handling conditions.
RefSeq:	<u>NP_958929</u>
RefSeq Size:	2404
RefSeq ORF:	1857



[View online »](#)

Synonyms: bA387M24.3; KNSL8

Locus ID: 89953

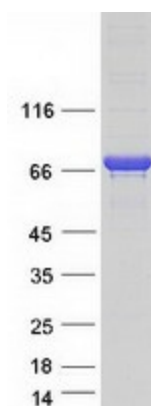
UniProt ID: [Q9NSK0](#), [A0A024RCZ8](#)

Cytogenetics: 6p21.1

Summary: Kinesin is a microtubule-associated force-producing protein that may play a role in organelle transport. The light chain may function in coupling of cargo to the heavy chain or in the modulation of its ATPase activity (By similarity).[UniProtKB/Swiss-Prot Function]

Protein Families: Druggable Genome

Product images:



Coomassie blue staining of purified KLC4 protein (Cat# [TP310268]). The protein was produced from HEK293T cells transfected with KLC4 cDNA clone (Cat# [RC210268]) using MegaTran 2.0 (Cat# [TT210002]).