

Product datasheet for PH310266

RNPEPL1 (NM_018226) Human Mass Spec Standard

Product data:

Product Type:	Mass Spec Standards
Description:	RNPEPL1 MS Standard C13 and N15-labeled recombinant protein (NP_060696)
Species:	Human
Expression Host:	HEK293
Expression cDNA Clone or AA Sequence:	RC210266
Predicted MW:	55.5 kDa
Protein Sequence:	>RC210266 protein sequence Red=Cloning site Green=Tags(s)

MSATRSAYMEEEGVFHFHMEHPVPAYLVALVAGDLKPADIGPRSRVWAEPCLLPATSKLSGAVEQWLSA
AERLYGPMWGRYDIVFLPPSFPIVAMENPCLTFIISSEI SDEFLLVIDVIHEVAHSWFGNAVNTATWEE
MWLSEGLATYAQRRTTETTYGAAFTCLEAFRLDALHRQMKLLGEDSPVSKLQVKLEPGVNP SHLMNLF
YEKGYCFVYYLSQLCGDPQRFDLFRAYVEKYKFTSVVAQDLLDSFLSFFPELKEQSVDCRAGLEFERWL
NATGPPLAEPDL SQGSSLTRPVEALFQLWTAEPDQAAAASASAIIDISKWRTFQTALFLDRLLDGSPLPQE
VMSLSKCYSSLLDSMNAEIRIRWLQIVVRNDYYPDLHRVRRFLESQMSRMYTIPLYEDLCTGALKSFAL
EVFYQTQGR LHPNLRRAIQILSQGLGSSTEPASEPSTELGKAEADTSDAQALLLGDEAPSSAISLRDV
NVSA

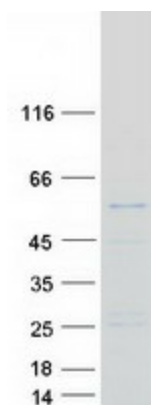
TRTRPLEQKLI SEEDLAANDILDYKDDDDKV

Tag:	C-Myc/DDK
Purity:	> 80% as determined by SDS-PAGE and Coomassie blue staining
Concentration:	>0.05 µg/µL as determined by microplate BCA method
Labeling Method:	Labeled with [U- ¹³ C ₆ , ¹⁵ N ₄]-L-Arginine and [U- ¹³ C ₆ , ¹⁵ N ₂]-L-Lysine
Buffer:	25 mM Tris-HCl, 100 mM glycine, pH 7.3
Storage:	Store at -80°C. Avoid repeated freeze-thaw cycles.
Stability:	Stable for 3 months from receipt of products under proper storage and handling conditions.
RefSeq:	<u>NP_060696</u>
RefSeq Size:	3048
RefSeq ORF:	1482



[View online »](#)

Locus ID:	57140
UniProt ID:	Q9HAU8
Cytogenetics:	2q37.3
Summary:	Broad specificity aminopeptidase which preferentially hydrolyzes an N-terminal methionine, citrulline or glutamine.[UniProtKB/Swiss-Prot Function]
Protein Families:	Druggable Genome

Product images:

Coomassie blue staining of purified RNPEPL1 protein (Cat# [TP310266]). The protein was produced from HEK293T cells transfected with RNPEPL1 cDNA clone (Cat# [RC210266]) using MegaTran 2.0 (Cat# [TT210002]).