

Product datasheet for PH310265

EPS8L2 (NM_022772) Human Mass Spec Standard

Product data:

Product Type:	Mass Spec Standards
Description:	EPS8L2 MS Standard C13 and N15-labeled recombinant protein (NP_073609)
Species:	Human
Expression Host:	HEK293
Expression cDNA Clone or AA Sequence:	RC210265
Predicted MW:	80.6 kDa
Protein Sequence:	>RC210265 protein sequence Red=Cloning site Green=Tags(s)

MSQSGAVSCCPGATNGSLGRSDGVAKMSPKDLFEQRKKYSNSNIMHETSQYHVQHLATFIMDKSEAITSVDDAIRKLVQLSSKEKIWTQEMLLQVNDQSLRLLDIESQELEDPLPTVQRSQTVLNQLRYPVSVLLVCQDSEQSKPDVHFFHCDEVEAELVHEDIESALADCRLGKKMRPQTLKGHQEKIRQRQSILPPPQGPAPIPFQHRGGDSPEAKNRVGPQVPLSEPGFRRRESQEEPRAVLAQKIEKETQILNCALDDIEWFVARLQKAAEAFKQLNQRKKGKKKGAEGVLTLRARPPSEGEFIDCFQKIKLA INLLAKLQKHIQNPSAAELVHFLFGPLDLIVNTCSGPDIA RSVSCPLL SRDAVDFLRGHLVPKEMSLWESLGE SWMRPSEWPREPQVPL YVPKFHSGWEPPVDV LQEAPWEVEGLASAPIEEVSPVSRQSI RNSQKHSPTSEPTPPGDALPPVSSPHTRGYQPTPAMAKYVKILYDF TARNANELSVLKDEVLEVL EDGRQWWKLR SRSGQAGYVPCNILGEARPE DAPFEQAGQKYWGPASPTHKLPSPFPGNKDELMQHMDEVNDELIRKISNIRAQPQRHFRVERSQPVSQPLTYESGPDEVRAWLEAKAFSPRIVENLGIL TGPQLFSLNKEELKKVCGEEGVRVYSQ LTMQKAFLEKQSGSELEELMKNKFHSMNQRRGEDS

TRTRPLEQKLISEEDLAANDILDYKDDDDKV

Tag:	C-Myc/DDK
Purity:	> 80% as determined by SDS-PAGE and Coomassie blue staining
Concentration:	>0.05 µg/µL as determined by microplate BCA method
Labeling Method:	Labeled with [U- 13C6, 15N4]-L-Arginine and [U- 13C6, 15N2]-L-Lysine
Buffer:	25 mM Tris-HCl, 100 mM glycine, pH 7.3
Storage:	Store at -80°C. Avoid repeated freeze-thaw cycles.
Stability:	Stable for 3 months from receipt of products under proper storage and handling conditions.
RefSeq:	<u>NP_073609</u>



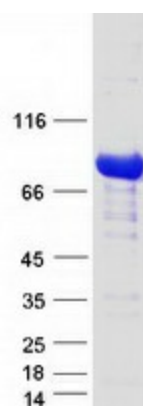
[View online »](#)

RefSeq Size: 3156
RefSeq ORF: 2145
Synonyms: DFNB106; EPS8R2
Locus ID: 64787
UniProt ID: [Q9H6S3](#)
Cytogenetics: 11p15.5

Summary: This gene encodes a member of the EPS8 gene family. The encoded protein, like other members of the family, is thought to link growth factor stimulation to actin organization, generating functional redundancy in the pathways that regulate actin cytoskeletal remodeling. [provided by RefSeq, Dec 2008]

Protein Families: Druggable Genome

Product images:



Coomassie blue staining of purified EPS8L2 protein (Cat# [TP310265]). The protein was produced from HEK293T cells transfected with EPS8L2 cDNA clone (Cat# [RC210265]) using MegaTran 2.0 (Cat# [TT210002]).