

Product datasheet for PH310256

Mint3 (APBA3) (NM_004886) Human Mass Spec Standard

Product data:

Product Type:	Mass Spec Standards
Description:	APBA3 MS Standard C13 and N15-labeled recombinant protein (NP_004877)
Species:	Human
Expression Host:	HEK293
Expression cDNA Clone or AA Sequence:	RC210256
Predicted MW:	61.5 kDa
Protein Sequence:	>RC210256 protein sequence Red=Cloning site Green=Tags(s)

MDFPTISRSPSGPPAMDLEGPRDILVPSIDLTPDSQWDPMPGGPGLSRMELDESSLQELVQQFEALPGD
LVGPSPGGAPCPLHIATGHGLASQEIADAHGLLSAEAGRDDLGLLHCEECPPSQTGPEEPLEPAPRLQ
PPEDPDESDSPEWVEGASAEQEGSRSSSSSPEPWLETVPLVTPPEPPAGAQSPELASYAPQEVPGPC
DHEDLLDGVIFGARYLGSTQLVSERNPPTSTRMAQAREAMDRVKAPDGETQPMTEVDL FVSTKRIKVLTA
DSQEAMMDHALHTISYADIGCVLVMARRRLARRPAPQDHGRRLYKMLCHV FYAEDAQLIAQAIGQAF
AAYSQFLRESGIDPSQVGVHPSPGACHLHNGDLDFHSNSDNCREVHLEKRRGEGGLGVALVESGWGSLPT
AVIANLLHGGPAERSGALSIGDRLTAINGTSLVGLPLAACQAAVRETKSQT SVTLSIVHCPPVTTAIHR
PHAREQLGFCVEDGIICSLLRGGIAERGGIRVGHRIIEINGQSVVATPHARI IELLTEAYGEVHIKTMPA
ATYRLLTGQEQPVYL

TRTRPLEQKLI SEEDLAANDILDYKDDDDKV

Tag:	C-Myc/DDK
Purity:	> 80% as determined by SDS-PAGE and Coomassie blue staining
Concentration:	>0.05 µg/µL as determined by microplate BCA method
Labeling Method:	Labeled with [U- ¹³ C ₆ , ¹⁵ N ₄]-L-Arginine and [U- ¹³ C ₆ , ¹⁵ N ₂]-L-Lysine
Buffer:	25 mM Tris-HCl, 100 mM glycine, pH 7.3
Storage:	Store at -80°C. Avoid repeated freeze-thaw cycles.
Stability:	Stable for 3 months from receipt of products under proper storage and handling conditions.
RefSeq:	<u>NP_004877</u>
RefSeq Size:	2158
RefSeq ORF:	1725



[View online »](#)

Synonyms: MGC:15815; mint3; X11L2

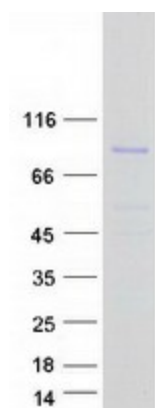
Locus ID: 9546

UniProt ID: [O96018](#)

Cytogenetics: 19p13.3

Summary: The protein encoded by this gene is a member of the X11 protein family. It is an adapter protein that interacts with the Alzheimer's disease amyloid precursor protein. This gene product is believed to be involved in signal transduction processes. This gene is a candidate gene for Alzheimer's disease. [provided by RefSeq, Jul 2008]

Product images:



Coomassie blue staining of purified APBA3 protein (Cat# [TP310256]). The protein was produced from HEK293T cells transfected with APBA3 cDNA clone (Cat# [RC210256]) using MegaTran 2.0 (Cat# [TT210002]).