

Product datasheet for PH310250

PBX2 (NM_002586) Human Mass Spec Standard

Product data:

Product Type:	Mass Spec Standards
Description:	PBX2 MS Standard C13 and N15-labeled recombinant protein (NP_002577)
Species:	Human
Expression Host:	HEK293
Expression cDNA Clone or AA Sequence:	RC210250
Predicted MW:	45.7 kDa
Protein Sequence:	>RC210250 representing NM_002586 Red =Cloning site Green =Tags(s)

MDERLLGPPPPGGGRGGLGLVSGEPGGPGEPGGGDPGGGSGGVPGGRGKQDIGDILQQIMTITDQSLDE
 AQAKKHALNCHRMKPALFSVLCEIKEKTGLSIRSSQEEEPVDPQLMRDNLMLLAEGVAGPEKGGGAAAA
 AAAAAAGGGVSPDNSIEHSDYRSKLAQIRHIYHSELEKYEQACNEFTTHVMNLLREQSRTRPVAPKEMER
 MVSIIHRKFSAIQMLKQSTCEAVMILRSRFLDARRKRRNFSKQATEVLNEYFYSHLSNPYPSEEAKEEL
 AKKCGITVSQVSNWFGNKRIRYKKNIGKFQEEANIYAVKTAVSVTQGGHSRTSSPTPPSSAGSGGSFNLS
 GSGDMFLGMPGLNGDSYSASQVESLRHSMGPGGYGDNLGGGQMYSPREMRANGSWQEA VTPSSVTSPTTEG
 PGSVHSDTSN

TRTRPLEQKLISEEDLAANDILDYKDDDDKV

Tag:	C-Myc/DDK
Purity:	> 80% as determined by SDS-PAGE and Coomassie blue staining
Concentration:	>0.05 µg/µL as determined by microplate BCA method
Labeling Method:	Labeled with [U- ¹³ C ₆ , ¹⁵ N ₄]-L-Arginine and [U- ¹³ C ₆ , ¹⁵ N ₂]-L-Lysine
Buffer:	25 mM Tris-HCl, 100 mM glycine, pH 7.3
Storage:	Store at -80°C. Avoid repeated freeze-thaw cycles.
Stability:	Stable for 3 months from receipt of products under proper storage and handling conditions.
RefSeq:	<u>NP_002577</u>
RefSeq Size:	3231
RefSeq ORF:	1290
Synonyms:	G17; HOX12; PBX2MHC


[View online »](#)

Locus ID: 5089

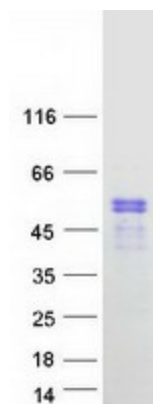
UniProt ID: [P40425](#), [A0A024RCR3](#)

Cytogenetics: 6p21.32

Summary: This gene encodes a ubiquitously expressed member of the TALE/PBX homeobox family. It was identified by its similarity to a homeobox gene which is involved in t(1;19) translocation in acute pre-B-cell leukemias. This protein is a transcriptional activator which binds to the TLX1 promoter. The gene is located within the major histocompatibility complex (MHC) on chromosome 6. [provided by RefSeq, Jul 2008]

Protein Families: Transcription Factors

Product images:



Coomassie blue staining of purified PBX2 protein (Cat# [TP310250]). The protein was produced from HEK293T cells transfected with PBX2 cDNA clone (Cat# [RC210250]) using MegaTran 2.0 (Cat# [TT210002]).