

## Product datasheet for PH310245

### Macrophage Inflammatory Protein 4 (CCL18) (NM\_002988) Human Mass Spec Standard

#### Product data:

Product Type:	Mass Spec Standards
Description:	CCL18 MS Standard C13 and N15-labeled recombinant protein (NP_002979)
Species:	Human
Expression Host:	HEK293
Expression cDNA Clone or AA Sequence:	RC210245
Predicted MW:	9.8 kDa
Protein Sequence:	>RC210245 protein sequence Red=Cloning site Green=Tags(s)  MKGLAAALLVLVCTMALCSCAQVGTNKELCCLVYTSWQIPQKFIVDYSETSPQCPKPGVILLTKRGRQIC ADPNKKWVQKYISDLKLNA  TRTRPLEQKLISEEDLAANDILDYKDDDDKV
Tag:	C-Myc/DDK
Purity:	> 80% as determined by SDS-PAGE and Coomassie blue staining
Concentration:	>0.05 µg/µL as determined by microplate BCA method
Labeling Method:	Labeled with [U- 13C6, 15N4]-L-Arginine and [U- 13C6, 15N2]-L-Lysine
Buffer:	25 mM Tris-HCl, 100 mM glycine, pH 7.3
Storage:	Store at -80°C. Avoid repeated freeze-thaw cycles.
Stability:	Stable for 3 months from receipt of products under proper storage and handling conditions.
RefSeq:	<a href="#">NP_002979</a>
RefSeq Size:	798
RefSeq ORF:	267
Synonyms:	AMAC-1; AMAC1; CKb7; DC-CK1; DCCK1; MIP-4; PARC; SCYA18
Locus ID:	6362
UniProt ID:	<a href="#">P55774</a>
Cytogenetics:	17q12



[View online »](#)

**Summary:**

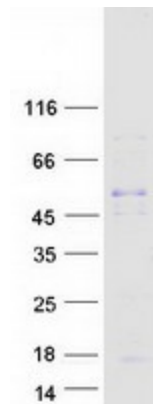
This antimicrobial gene is one of several Cys-Cys (CC) cytokine genes clustered on the q arm of chromosome 17. Cytokines are a family of secreted proteins involved in immunoregulatory and inflammatory processes. The CC cytokines are proteins characterized by two adjacent cysteines. The cytokine encoded by this gene displays chemotactic activity for naive T cells, CD4+ and CD8+ T cells and nonactivated lymphocytes, but not for monocytes or granulocytes. This chemokine attracts naive T lymphocytes toward dendritic cells and activated macrophages in lymph nodes. It may play a role in both humoral and cell-mediated immunity responses. [provided by RefSeq, Sep 2014]

**Protein Families:**

Druggable Genome, Secreted Protein

**Protein Pathways:**

Chemokine signaling pathway, Cytokine-cytokine receptor interaction

**Product images:**

Coomassie blue staining of purified CCL18 protein (Cat# [TP310245]). The protein was produced from HEK293T cells transfected with CCL18 cDNA clone (Cat# [RC210245]) using MegaTran 2.0 (Cat# [TT210002]).