

Product datasheet for PH310241

SLC10A1 (NM_003049) Human Mass Spec Standard

Product data:

Product Type:	Mass Spec Standards
Description:	SLC10A1 MS Standard C13 and N15-labeled recombinant protein (NP_003040)
Species:	Human
Expression Host:	HEK293
Expression cDNA Clone or AA Sequence:	RC210241
Predicted MW:	37.9 kDa
Protein Sequence:	>RC210241 representing NM_003049 Red =Cloning site Green =Tags(s) MEAHNASAPFNFTLPPNFGKRPTDLALSIVLVMFLFFIMLSLGGCTMEFSKIKAHLWPKGLAIALVAQYG IMPLTAFVLGKVFRLKNIEALAILVCGCSPGGNLSNVFSLAMKGMNLSIVMTTCSTFCALGMPPLLLYI YSRGIYDGLDKVPYKIVISLVLVLIPTIGIVLKSQRQYMRVYIKGMMIIILLCSVAVTVLSAINV GKSIMFAMTPLL IATSSLMPFIGFLLGYVLSALFCLNGRCRRTVSMETGCQNVQLCSTILNVAFPPEVIG PLFFFPLLYMIFQLGEGLLLIAIFWCYEKFKTPKDKTKMIYTAATTEETIPGALGNGTYKGEDCSPCTA SGP TRRRLE QKLISEEDLAANDILDYKDDDDK V
Tag:	C-Myc/DDK
Purity:	> 80% as determined by SDS-PAGE and Coomassie blue staining
Concentration:	>0.05 µg/µL as determined by microplate BCA method
Labeling Method:	Labeled with [U- ¹³ C ₆ , ¹⁵ N ₄]-L-Arginine and [U- ¹³ C ₆ , ¹⁵ N ₂]-L-Lysine
Buffer:	25 mM Tris-HCl, 100 mM glycine, pH 7.3
Storage:	Store at -80°C. Avoid repeated freeze-thaw cycles.
Stability:	Stable for 3 months from receipt of products under proper storage and handling conditions.
RefSeq:	<u>NP_003040</u>
RefSeq Size:	1580
RefSeq ORF:	1047
Synonyms:	FHCA2; NTCP
Locus ID:	6554



[View online »](#)

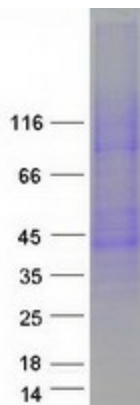
UniProt ID: [Q14973](#), [B2RA41](#)

Cytogenetics: 14q24.1

Summary: The protein encoded by this gene belongs to the sodium/bile acid cotransporter family, which are integral membrane glycoproteins that participate in the enterohepatic circulation of bile acids. Two homologous transporters are involved in the reabsorption of bile acids; the ileal sodium/bile acid cotransporter with an apical cell localization that absorbs bile acids from the intestinal lumen, bile duct and kidney, and the liver-specific sodium/bile acid cotransporter, represented by this protein, that is found in the basolateral membranes of hepatocytes. Bile acids are the catabolic product of cholesterol metabolism, hence this protein is important for cholesterol homeostasis. [provided by RefSeq, Oct 2011]

Protein Families: Druggable Genome, Transmembrane

Product images:



Coomassie blue staining of purified SLC10A1 protein (Cat# [TP310241]). The protein was produced from HEK293T cells transfected with SLC10A1 cDNA clone (Cat# [RC210241]) using MegaTran 2.0 (Cat# [TT210002]).