

Product datasheet for PH310239

RPA4 (NM_013347) Human Mass Spec Standard

Product data:

Product Type:	Mass Spec Standards
Description:	RPA4 MS Standard C13 and N15-labeled recombinant protein (NP_037479)
Species:	Human
Expression Host:	HEK293
Expression cDNA Clone or AA Sequence:	RC210239
Predicted MW:	28.9 kDa
Protein Sequence:	>RC210239 protein sequence Red=Cloning site Green=Tags(s) MSKSGFGSYGSISAADGASGGSDQLCERDATPAIKTQRPKVRIQDVVPCNVNQLLSSTVFDVPVFKVIRGII VSQVSIYGVIRGAEKASNHICYKIDDMTAKPIEARQWFGREKVKQVTPLSVGVYVKVFGILKCPTGTKSL EVLKIHVLEDMNEFTVHILETVNAHMMLDKARRDTTVESVPVSPSEVNDAGDNDESHRNF IQDEVLRLLIH ECPHQEGKSIHELRAQLCDLSVKAIKEAIDYLTVEGHIYPTVDREHFKSAD TRTRPLEQKLI SEEDLAANDILDYKDDDDKV
Tag:	C-Myc/DDK
Purity:	> 80% as determined by SDS-PAGE and Coomassie blue staining
Concentration:	>0.05 µg/µL as determined by microplate BCA method
Labeling Method:	Labeled with [U- ¹³ C ₆ , ¹⁵ N ₄]-L-Arginine and [U- ¹³ C ₆ , ¹⁵ N ₂]-L-Lysine
Buffer:	25 mM Tris-HCl, 100 mM glycine, pH 7.3
Storage:	Store at -80°C. Avoid repeated freeze-thaw cycles.
Stability:	Stable for 3 months from receipt of products under proper storage and handling conditions.
RefSeq:	NP_037479
RefSeq Size:	1560
RefSeq ORF:	783
Synonyms:	HSU24186
Locus ID:	29935
UniProt ID:	Q13156



[View online »](#)

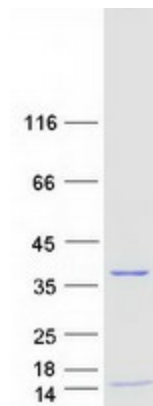
Cytogenetics: Xq21.33

Summary: This gene encodes a single-stranded DNA-binding protein that is the 30-kDa subunit of the replication protein A complex. Replication protein A is an essential factor for DNA double-strand break repair and cell cycle checkpoint activation. The encoded protein localizes to DNA repair foci and may be involved in the cellular DNA damage response. This protein may also play a role in inhibiting viral replication.[provided by RefSeq, Apr 2010]

Protein Families: Druggable Genome

Protein Pathways: DNA replication, Homologous recombination, Mismatch repair, Nucleotide excision repair

Product images:



Coomassie blue staining of purified RPA4 protein (Cat# [TP310239]). The protein was produced from HEK293T cells transfected with RPA4 cDNA clone (Cat# [RC210239]) using MegaTran 2.0 (Cat# [TT210002]).