

Product datasheet for PH310236

RGS8 (NM_033345) Human Mass Spec Standard

Product data:

Product Type:	Mass Spec Standards
Description:	RGS8 MS Standard C13 and N15-labeled recombinant protein (NP_203131)
Species:	Human
Expression Host:	HEK293
Expression cDNA Clone or AA Sequence:	RC210236
Predicted MW:	23 kDa
Protein Sequence:	>RC210236 protein sequence Red=Cloning site Green=Tags(s) MWNTLTRSLSDHPVGKDPQAMRTGQRQNKGMRTRLGCLSHKSDSCSDFTAILPDKPNRALKRLSTEEATR WADSFVLLSHKYGVAAFRFLKTEFSEENLEFWLACEEFKTRSTAKLVSKAHRIFEEFVDVQAPREVN IDFQTREATRKNLQEPSLTCFDQAQGVHSLMEKDSYPRFLRSKMYLDLLSQSQRRLS TRTRPLEQKLISEEDLAANDILDYKDDDDKV
Tag:	C-Myc/DDK
Purity:	> 80% as determined by SDS-PAGE and Coomassie blue staining
Concentration:	>0.05 µg/µL as determined by microplate BCA method
Labeling Method:	Labeled with [U- ¹³ C ₆ , ¹⁵ N ₄]-L-Arginine and [U- ¹³ C ₆ , ¹⁵ N ₂]-L-Lysine
Buffer:	25 mM Tris-HCl, 100 mM glycine, pH 7.3
Storage:	Store at -80°C. Avoid repeated freeze-thaw cycles.
Stability:	Stable for 3 months from receipt of products under proper storage and handling conditions.
RefSeq:	NP_203131
RefSeq Size:	783
RefSeq ORF:	594
Locus ID:	85397
UniProt ID:	P57771
Cytogenetics:	1q25.3



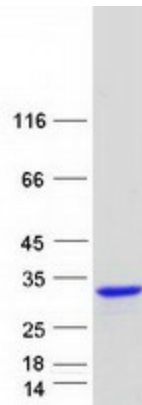
[View online »](#)

Summary:

This gene is a member of the regulator of G protein signaling (RGS) family and encodes a protein with a single RGS domain. Regulator of G protein signaling (RGS) proteins are regulatory and structural components of G protein-coupled receptor complexes. They accelerate transit through the cycle of GTP binding and hydrolysis to GDP, thereby terminating signal transduction, but paradoxically, also accelerate receptor-stimulated activation. [provided by RefSeq, Jul 2008]

Protein Families:

Druggable Genome

Product images:

Coomassie blue staining of purified RGS8 protein (Cat# [TP310236]). The protein was produced from HEK293T cells transfected with RGS8 cDNA clone (Cat# [RC210236]) using MegaTran 2.0 (Cat# [TT210002]).