

Product datasheet for PH310235

MMP3 (NM_002422) Human Mass Spec Standard

Product data:

Product Type:	Mass Spec Standards
Description:	MMP3 MS Standard C13 and N15-labeled recombinant protein (NP_002413)
Species:	Human
Expression Host:	HEK293
Expression cDNA Clone or AA Sequence:	RC210235
Predicted MW:	54 kDa
Protein Sequence:	>RC210235 protein sequence Red=Cloning site Green=Tags(s)

MKSLPILLLLCVAVCSAYPLDGAARGEDTSMNLVQKYLENYDLEKDVKQFVRRKDSGPVVKKIREMQKF
LGLEVTGKLDSDTLEVMRKPRCGVPDVGHFRTFPGIPKWRKTHLYRIVNYTPDLPKDAVDSAVEKALKV
WEEVTPLTFSRLYEGEADIMISFAVREHGDFYFPDGPNGVLAHAYAPGPGINGDAHFDDDEQWTKDTTGT
NLFLVAAHEIGHSLGLFHSANTEALMYPLYHSLTDLTRFRLSQDDINGIQSLYGPSPDPETPLVPTPEV
PPEPGTPANCDPALSFDAVSTLRGEILIFKDRHFWRKSLRKLPELHLISSFWPSLPSGVDAAYEVTSKD
LVFIFKGNQFWAIRGNEVRAGYPRGIHTLGFPPTRVKIDAAISDKEKNKYFFVEDKYWRFDEKRNSMEP
GFPKQIAEDFPGIDSKIDAVFEEFGFFYFFTGSSQLEFDPNAKKVTHTLKSNLNC

TRTRPLEQKLISEEDLAANDILDYKDDDDKV

Tag:	C-Myc/DDK
Purity:	> 80% as determined by SDS-PAGE and Coomassie blue staining
Concentration:	>0.05 µg/µL as determined by microplate BCA method
Labeling Method:	Labeled with [U- ¹³ C ₆ , ¹⁵ N ₄]-L-Arginine and [U- ¹³ C ₆ , ¹⁵ N ₂]-L-Lysine
Buffer:	25 mM Tris-HCl, 100 mM glycine, pH 7.3
Storage:	Store at -80°C. Avoid repeated freeze-thaw cycles.
Stability:	Stable for 3 months from receipt of products under proper storage and handling conditions.
RefSeq:	<u>NP_002413</u>
RefSeq Size:	1828
RefSeq ORF:	1431
Synonyms:	CHDS6; MMP-3; SL-1; STMY; STMY1; STR1



[View online »](#)

Locus ID: 4314

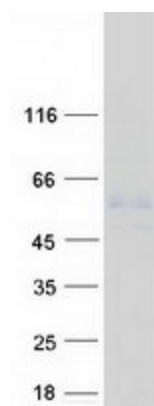
UniProt ID: [P08254](#)

Cytogenetics: 11q22.2

Summary: Proteins of the matrix metalloproteinase (MMP) family are involved in the breakdown of extracellular matrix in normal physiological processes, such as embryonic development, reproduction, and tissue remodeling, as well as in disease processes, such as arthritis and metastasis. Most MMP's are secreted as inactive proproteins which are activated when cleaved by extracellular proteinases. This gene encodes an enzyme which degrades fibronectin, laminin, collagens III, IV, IX, and X, and cartilage proteoglycans. The enzyme is thought to be involved in wound repair, progression of atherosclerosis, and tumor initiation. The gene is part of a cluster of MMP genes which localize to chromosome 11q22.3. [provided by RefSeq, Jul 2008]

Protein Families: Druggable Genome, Protease

Product images:



Coomassie blue staining of purified MMP3 protein (Cat# [TP310235]). The protein was produced from HEK293T cells transfected with MMP3 cDNA clone (Cat# [RC210235]) using MegaTran 2.0 (Cat# [TT210002]).