

Product datasheet for PH310231

CYP2C18 (NM_000772) Human Mass Spec Standard

Product data:

Product Type:	Mass Spec Standards
Description:	CYP2C18 MS Standard C13 and N15-labeled recombinant protein (NP_000763)
Species:	Human
Expression Host:	HEK293
Expression cDNA Clone or AA Sequence:	RC210231
Predicted MW:	55.5 kDa
Protein Sequence:	>RC210231 representing NM_000772 Red =Cloning site Green =Tags(s)

MDPAVALVLCCLFLLSLWRQSSGRGRPLSGPTPLPIIGNILQLDVKDMSKSLTNFSKVYGPVFTVYFG
 LKPIVVLHGVEAVKEALIDHGEEFSGRGSFPVAEKVNKGLGILFSGNKRWEIRRFCLMTLRNFGMGKRS
 IEDRVQEEARCLVEELRKTNASPCDPTFILGCAPCNVICSVIFHDFDYKDQRFNLMEKFENLRILSS
 PWIQVCNNFPALIDYLPGSHNKIAENFAYIKSYVLRIKEHQESLDMNSARDFIDCFLIKMEQEKHNQQS
 EFTVESLIATVTDMFGAGTETTSTTLRYGLLLKYPEVTAKVQEEIECVVGRNRSPCMQDRSHMPYTD
 VVHEIQRYIDLLPTNLPHAVTCOVKFKNYLIPKGTIIITSLTSVLHNDKEFPNPEMFDPGHFLDKSGNFK
 KSDYFMPFSAGKRMCMGEGLARMELFLFTTILQNFNLKSQVDPKDIDITPIANAFGRVPPLYQLCFIPV

TRTRPLEQKLISEEDLAANDILDYKDDDDKV

Tag:	C-Myc/DDK
Purity:	> 80% as determined by SDS-PAGE and Coomassie blue staining
Concentration:	>0.05 µg/µL as determined by microplate BCA method
Labeling Method:	Labeled with [U- ¹³ C ₆ , ¹⁵ N ₄]-L-Arginine and [U- ¹³ C ₆ , ¹⁵ N ₂]-L-Lysine
Buffer:	25 mM Tris-HCl, 100 mM glycine, pH 7.3
Storage:	Store at -80°C. Avoid repeated freeze-thaw cycles.
Stability:	Stable for 3 months from receipt of products under proper storage and handling conditions.
RefSeq:	<u>NP_000763</u>
RefSeq Size:	1995
RefSeq ORF:	1470
Synonyms:	CPCI; CYP2C; CYP2C17; P450-6B/29C; P450IIC17


[View online »](#)

Locus ID: 1562

UniProt ID: [P33260](#), [Q7Z348](#)

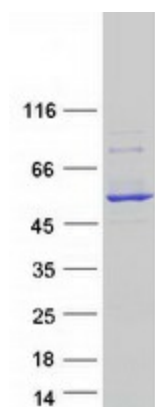
Cytogenetics: 10q23.33

Summary: This gene encodes a member of the cytochrome P450 superfamily of enzymes. The cytochrome P450 proteins are monooxygenases which catalyze many reactions involved in drug metabolism and synthesis of cholesterol, steroids and other lipids. This protein localizes to the endoplasmic reticulum but its specific substrate has not yet been determined. The gene is located within a cluster of cytochrome P450 genes on chromosome 10q24. An additional gene, CYP2C17, was once thought to exist; however, CYP2C17 is now considered an artefact based on a chimera of CYP2C18 and CYP2C19. Alternatively spliced transcript variants encoding different isoforms have been found for this gene. [provided by RefSeq, Jul 2008]

Protein Families: Druggable Genome, P450

Protein Pathways: Arachidonic acid metabolism, Drug metabolism - cytochrome P450, Linoleic acid metabolism, Metabolic pathways, Metabolism of xenobiotics by cytochrome P450, Retinol metabolism

Product images:



Coomassie blue staining of purified CYP2C18 protein (Cat# [TP310231]). The protein was produced from HEK293T cells transfected with CYP2C18 cDNA clone (Cat# [RC210231]) using MegaTran 2.0 (Cat# [TT210002]).