

## Product datasheet for PH310222

### Gastrin (GAST) (NM\_000805) Human Mass Spec Standard

#### Product data:

Product Type:	Mass Spec Standards
Description:	GAST MS Standard C13 and N15-labeled recombinant protein (NP_000796)
Species:	Human
Expression Host:	HEK293
Expression cDNA Clone or AA Sequence:	RC210222
Predicted MW:	11.4 kDa
Protein Sequence:	>RC210222 protein sequence Red=Cloning site Green=Tags(s)  MQRLCVYVLIFALALAAFSEASWKPRSQQPDAPLGTGANRDLELPWLEQQGPASHHRRQLGPQGPLVA DPSKKQGPWLEEEEEAYGWMDFGRRSAEDEN  TRTRPLEQKLISEEDLAANDILDYKDDDDKV
Tag:	C-Myc/DDK
Purity:	> 80% as determined by SDS-PAGE and Coomassie blue staining
Concentration:	>0.05 µg/µL as determined by microplate BCA method
Labeling Method:	Labeled with [U- 13C6, 15N4]-L-Arginine and [U- 13C6, 15N2]-L-Lysine
Buffer:	25 mM Tris-HCl, 100 mM glycine, pH 7.3
Storage:	Store at -80°C. Avoid repeated freeze-thaw cycles.
Stability:	Stable for 3 months from receipt of products under proper storage and handling conditions.
RefSeq:	<u><a href="#">NP_000796</a></u>
RefSeq Size:	475
RefSeq ORF:	303
Synonyms:	GAS
Locus ID:	2520
UniProt ID:	<u><a href="#">P01350</a></u> , <u><a href="#">A0A0E3VY36</a></u>
Cytogenetics:	17q21.2



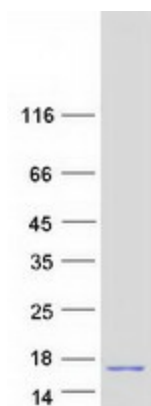
[View online »](#)

**Summary:**

Gastrin is a hormone whose main function is to stimulate secretion of hydrochloric acid by the gastric mucosa, which results in gastrin formation inhibition. This hormone also acts as a mitogenic factor for gastrointestinal epithelial cells. Gastrin has two biologically active peptide forms, G34 and G17. [provided by RefSeq, Jul 2008]

**Protein Families:**

Druggable Genome, Secreted Protein

**Product images:**

Coomassie blue staining of purified GAST protein (Cat# [TP310222]). The protein was produced from HEK293T cells transfected with GAST cDNA clone (Cat# [RC210222]) using MegaTran 2.0 (Cat# [TT210002]).