

## Product datasheet for PH310219

### alpha 5 Defensin (DEFA5) (NM\_021010) Human Mass Spec Standard

#### Product data:

Product Type:	Mass Spec Standards
Description:	DEFA5 MS Standard C13 and N15-labeled recombinant protein (NP_066290)
Species:	Human
Expression Host:	HEK293
Expression cDNA Clone or AA Sequence:	RC210219
Predicted MW:	10.1 kDa
Protein Sequence:	>RC210219 protein sequence <b>Red</b> =Cloning site <b>Green</b> =Tags(s)  MRTIAILAAILLVALQAQAESLQERADEATTQKQSGEDNQDLAISFAGNGLSALRTSGSQARATCYCRTG RCATRESLSGVCEISGRLYRLCCR  <b>TR</b> TRPLEQKLISEEDLAANDILDYKDDDDKV
Tag:	C-Myc/DDK
Purity:	> 80% as determined by SDS-PAGE and Coomassie blue staining
Concentration:	>0.05 µg/µL as determined by microplate BCA method
Labeling Method:	Labeled with [U- 13C6, 15N4]-L-Arginine and [U- 13C6, 15N2]-L-Lysine
Buffer:	25 mM Tris-HCl, 100 mM glycine, pH 7.3
Storage:	Store at -80°C. Avoid repeated freeze-thaw cycles.
Stability:	Stable for 3 months from receipt of products under proper storage and handling conditions.
RefSeq:	<a href="#">NP_066290</a>
RefSeq Size:	468
RefSeq ORF:	282
Synonyms:	DEF5; HD-5
Locus ID:	1670
UniProt ID:	<a href="#">Q01523</a>
Cytogenetics:	8p23.1



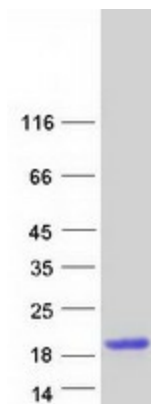
[View online »](#)

**Summary:**

Defensins are a family of antimicrobial and cytotoxic peptides thought to be involved in host defense. They are abundant in the granules of neutrophils and also found in the epithelia of mucosal surfaces such as those of the intestine, respiratory tract, urinary tract, and vagina. Members of the defensin family are highly similar in protein sequence and distinguished by a conserved cysteine motif. Several of the alpha defensin genes appear to be clustered on chromosome 8. The protein encoded by this gene, defensin, alpha 5, is highly expressed in the secretory granules of Paneth cells of the ileum. [provided by RefSeq, Oct 2014]

**Protein Families:**

Secreted Protein

**Product images:**

Coomassie blue staining of purified DEFA5 protein (Cat# [TP310219]). The protein was produced from HEK293T cells transfected with DEFA5 cDNA clone (Cat# [RC210219]) using MegaTran 2.0 (Cat# [TT210002]).