

Product datasheet for PH310197

Phospholipase C beta 1 (PLCB1) (NM_015192) Human Mass Spec Standard

Product data:

Product Type:	Mass Spec Standards
Description:	PLCB1 MS Standard C13 and N15-labeled recombinant protein (NP_056007)
Species:	Human
Expression Host:	HEK293
Expression cDNA Clone or AA Sequence:	RC210197
Predicted MW:	138.6 kDa
Protein Sequence:	>RC210197 protein sequence Red=Cloning site Green=Tags(s)

MAGAQPGVHALQLKPVCSDSLKKGTKFVKWDDSTIVTPIILRTDPQGFFFYWTDQNKETELLDLSLVK
DARCGRHAKAPKDPKLELLDVGNIQRMITVVYGPDLVNIISHLNLVAFQEEVAKEWTFNEVSLATN
LLAQNMSRDAFLEKAYTKLKLQVTPGRIPLKNIYRFLSADRKRVTALEACSLPSSRNDIPSQEDFTPE
VYRVFLNNLCPRPEIDNIFSEFGAKSKPYLTVDMDFINLKQRDPRLNEILYPPLKQEYVQVLEIEKYEP
NNSLARKGQISVDGFMRYLSGEENGVSPEKLDLNEEDMSQPLSHYFINSSHNTYLTAGQLAGNSSVEMYR
QVLLSGCRCVELDCWKGRTAEEEPVITHGFTMTTEISFKEVIEAIAECAFKTSPFPILLSFENHVDSPKQ
QAKMAEYCRLIFGDALLMEPLEKYPLESGVPLSPMDLMYKILVKNKKKSHKSSESGGKKLSEQASNTY
SDSSSMFEPSSPGAGEADTESDDDDDDDDCKSSMDEGTAGSEAMATEEMSNLVNYIQPVKFESEFISKK
RNKSFEMSSFVETKGLEQLTKSPVEFVEYNKMLSRIPYKGRVDSNYPQLFWNAGCQMVNLFQTM
LAMQINMGMYEYNGKSGYRLKPEFMRPDKHDFPFTEGIVDGIANTLSVKIISGQFLSDKKVGTYYEVD
MFGLPVDTRRKAFKTKTSQGNVNPVWEEPIVFKKVVLPVLAACLRVAVYEEGGKFIGHRILPVQAIRPG
YHYICLRNERNQPLTLPVAVVYIEVKDYVPDTPYADVIEALSNPIRYVNLMEQRAKQALALEDEEEVKK
EADPGETPSEAPSEARTTPAENGVNHTTTPKPPSQALHSQPAPGSVKAPAKTEDLIQSVLTEVEAQT
EELKQQKSFVKLQKKHYKEMKDLVKRHHKTTDLIKEHTTKYNEIQNDYLRRRAALEKSAKKDSKKKSEP
SSPDHGSSTIEQDLAALDAEMTQKLDLKDQKQQLNLRQEQYYSEKYQKREHIKLLIQKLTDAEECQ
NNQLKLLKEICEKEKELKKKMDKRRQEKITEAKSKDKSQMEEEEKTEMIRSYIQEVVQYIKRLEEAQSKR
QEKLVKHKHKEIRQQILDEKPKLQVELEQYQDKFKRLPLEILEFVQEAAMGKISESDSNHGSAPLSLSSDP
GKVNHKTPSSEELGGDIPGKEFDTP

TRTRPLEQKLISEEDLAANDILDYKDDDDKV

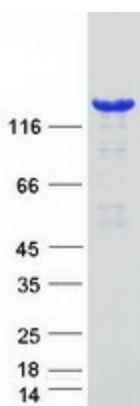
Tag:	C-Myc/DDK
Purity:	> 80% as determined by SDS-PAGE and Coomassie blue staining
Concentration:	>0.05 µg/µL as determined by microplate BCA method
Labeling Method:	Labeled with [U- ¹³ C ₆ , ¹⁵ N ₄]-L-Arginine and [U- ¹³ C ₆ , ¹⁵ N ₂]-L-Lysine



[View online »](#)

Buffer:	25 mM Tris-HCl, 100 mM glycine, pH 7.3
Storage:	Store at -80°C. Avoid repeated freeze-thaw cycles.
Stability:	Stable for 3 months from receipt of products under proper storage and handling conditions.
RefSeq:	NP_056007
RefSeq Size:	7103
RefSeq ORF:	3648
Synonyms:	DEE12; EIEE12; PI-PLC; PLC-154; PLC-beta-1; PLC-I; PLC154; PLCB1A; PLCB1B
Locus ID:	23236
UniProt ID:	Q9NQ66
Cytogenetics:	20p12.3
Summary:	The protein encoded by this gene catalyzes the formation of inositol 1,4,5-trisphosphate and diacylglycerol from phosphatidylinositol 4,5-bisphosphate. This reaction uses calcium as a cofactor and plays an important role in the intracellular transduction of many extracellular signals. This gene is activated by two G-protein alpha subunits, alpha-q and alpha-11. Two transcript variants encoding different isoforms have been found for this gene. [provided by RefSeq, Jul 2008]
Protein Families:	Druggable Genome
Protein Pathways:	Alzheimer's disease, Calcium signaling pathway, Chemokine signaling pathway, Gap junction, GnRH signaling pathway, Huntington's disease, Inositol phosphate metabolism, Long-term depression, Long-term potentiation, Melanogenesis, Metabolic pathways, Phosphatidylinositol signaling system, Vascular smooth muscle contraction, Wnt signaling pathway

Product images:



Coomassie blue staining of purified PLCB1 protein (Cat# [TP310197]). The protein was produced from HEK293T cells transfected with PLCB1 cDNA clone (Cat# [RC210197]) using MegaTran 2.0 (Cat# [TT210002]).