

## Product datasheet for PH310187

### Serotonin transporter (SLC6A4) (NM\_001045) Human Mass Spec Standard

#### Product data:

Product Type:	Mass Spec Standards
Description:	SLC6A4 MS Standard C13 and N15-labeled recombinant protein (NP_001036)
Species:	Human
Expression Host:	HEK293
Expression cDNA Clone or AA Sequence:	RC210187
Predicted MW:	70.1 kDa
Protein Sequence:	>RC210187 representing NM_001045 Red=Cloning site Green=Tags(s)

METTPLN SQQLSACEDGEDCQENGV LQKVPTPGDKVESGQISNGYSAVPSPGAGDDTRHSIPATTTTL  
VAELHQGERETWGKKVDFLLSVIGYAVDLGNVWRFYICYQNGGAFLLPYTIMAIFGGIPLFYMELALG  
QYHRNGCISIWIKICPIFKGIGYAICIIAFYIASYYNTIMAWALYYLISSFTDQLPWTSCKNSWNTGNCT  
NYFSEDNITWTLHSTSPAEEFYTRHVLQIHRSKGLQDLGGISWQLALCIMLIFTVIYFSIWKGVKTSKGV  
VWVTATFPYIILSVLLVRGATLPGAWRGVLFYLPKNWQKLLLETGVWIDAAAQIFFSLGPGFVLLAFASY  
NKFNNCYQDALVTSVNCMTSFVSGFVIFTVLGYMAEMRNEDVSEVAKDAGPSLLFITYAEAIANMPAS  
TFFAIIFFLMLITLGLDSTFAGLEGVITAVLDEFPHVWAKRRERFVLAVVITCFGSLVTLTFGGAYVVK  
LLEEYATGPAVL TVALIEAVAVSWFYGITQFCRDVKEMLGFSPGWFWRICWVAISPLFLFIICSFLMSP  
PQLRLFQYNYPYWSIILGYCIGTSSFICIPYIAYRLIITPGTFKERIISITPETPTEIPCGDIRLNAV

TRTRPLEQKLI SEEDLAANDILDYKDDDDKV

Tag:	C-Myc/DDK
Purity:	> 80% as determined by SDS-PAGE and Coomassie blue staining
Concentration:	>0.05 µg/µL as determined by microplate BCA method
Labeling Method:	Labeled with [U- <sup>13</sup> C <sub>6</sub> , <sup>15</sup> N <sub>4</sub> ]-L-Arginine and [U- <sup>13</sup> C <sub>6</sub> , <sup>15</sup> N <sub>2</sub> ]-L-Lysine
Buffer:	25 mM Tris-HCl, 100 mM glycine, pH 7.3
Storage:	Store at -80°C. Avoid repeated freeze-thaw cycles.
Stability:	Stable for 3 months from receipt of products under proper storage and handling conditions.
RefSeq:	<a href="#">NP_001036</a>
RefSeq Size:	2756
RefSeq ORF:	1890



[View online »](#)

**Synonyms:** 5-HTT; 5-HTTLPR; 5HTT; hSERT; HTT; OCD1; SERT; SERT1

**Locus ID:** 6532

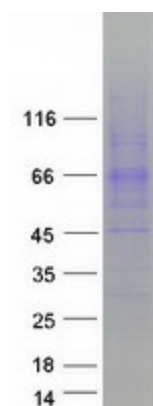
**UniProt ID:** [P31645](#), [B2R7Y7](#)

**Cytogenetics:** 17q11.2

**Summary:** This gene encodes an integral membrane protein that transports the neurotransmitter serotonin from synaptic spaces into presynaptic neurons. The encoded protein terminates the action of serotonin and recycles it in a sodium-dependent manner. This protein is a target of psychomotor stimulants, such as amphetamines and cocaine, and is a member of the sodium:neurotransmitter symporter family. A repeat length polymorphism in the promoter of this gene has been shown to affect the rate of serotonin uptake. There have been conflicting results in the literature about the possible effect, if any, that this polymorphism may play in behavior and depression. [provided by RefSeq, May 2019]

**Protein Families:** Druggable Genome, Transmembrane

### Product images:



Coomassie blue staining of purified SLC6A4 protein (Cat# [TP310187]). The protein was produced from HEK293T cells transfected with SLC6A4 cDNA clone (Cat# [RC210187]) using MegaTran 2.0 (Cat# [TT210002]).