

## Product datasheet for PH310163

### S1PR2 (NM\_004230) Human Mass Spec Standard

#### Product data:

|                                       |   |
|---------------------------------------|---|
| Product Type:                         | Mass Spec Standards   |
| Description:                          | S1PR2 MS Standard C13 and N15-labeled recombinant protein (NP_004221)   |
| Species:                              | Human   |
| Expression Host:                      | HEK293  |
| Expression cDNA Clone or AA Sequence: | RC210163  |
| Predicted MW:                         | 38.9 kDa  |
| Protein Sequence:                     | >RC210163 protein sequence<br>Red=Cloning site Green=Tags(s)<br><br>MGSLYSEYLNPNKVQEHYNYTKETLETQETT SRQVASAFIVILCCAIVVENLLVLI AVARN SKFHSAMYL<br>FLGNLAASDLLAGVAFVANTLLSGSVTLRLTPVQWFAREGSAFITLSASVFSLLAIAIERHVIAIAKVKLY<br>GSDKSCRMLLLIGASWLSLVLGGLPILGWNCLGHLEACSTVLPYAKHYVLCVVTIFSILLAIIVALYV<br>RIYCVVRRSSHADMAAPQTLALLKTVTIVLGVFIVCWLPAFSILLLDYACPVHSCPILYKAHYFFAVSTLN<br>SLLNPVIYTWRSRDLRREVL RPLQCWRPGVGVQRRRRGGTPGHLLPLRSSSSLERGMHMTSPTFLEGN<br>TVV<br><br>TRTRPLEQKLI SEEDLAANDILDYKDDDDKV |
| Tag:                                  | C-Myc/DDK   |
| Purity:                               | > 80% as determined by SDS-PAGE and Coomassie blue staining   |
| Concentration:                        | >0.05 µg/µL as determined by microplate BCA method  |
| Labeling Method:                      | Labeled with [U- <sup>13</sup> C <sub>6</sub> , <sup>15</sup> N <sub>4</sub> ]-L-Arginine and [U- <sup>13</sup> C <sub>6</sub> , <sup>15</sup> N <sub>2</sub> ]-L-Lysine  |
| Buffer:                               | 25 mM Tris-HCl, 100 mM glycine, pH 7.3  |
| Storage:                              | Store at -80°C. Avoid repeated freeze-thaw cycles.  |
| Stability:                            | Stable for 3 months from receipt of products under proper storage and handling conditions.  |
| RefSeq:                               | <u>NP_004221</u>  |
| RefSeq Size:                          | 3589  |
| RefSeq ORF:                           | 1061  |
| Synonyms:                             | AGR16; DFNB68; EDG-5; EDG5; Gpcr13; H218; LPB2; S1P2  |
| Locus ID:                             | 9294  |



[View online »](#)

UniProt ID: [O95136](#), [A0A024R7B2](#)

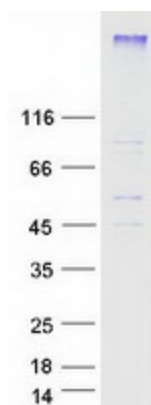
Cytogenetics: 19p13.2

Summary: This gene encodes a member of the G protein-coupled receptors, as well as the EDG family of proteins. The encoded protein is a receptor for sphingosine 1-phosphate, which participates in cell proliferation, survival, and transcriptional activation. Defects in this gene have been associated with congenital profound deafness. [provided by RefSeq, Mar 2016]

Protein Families: Druggable Genome, GPCR, Transmembrane

Protein Pathways: Neuroactive ligand-receptor interaction

### Product images:



Coomassie blue staining of purified S1PR2 protein (Cat# [TP310163]). The protein was produced from HEK293T cells transfected with S1PR2 cDNA clone (Cat# [RC210163]) using MegaTran 2.0 (Cat# [TT210002]).