

Product datasheet for PH310143

Mannan Binding Lectin (MBL2) (NM_000242) Human Mass Spec Standard

Product data:

Product Type:	Mass Spec Standards
Description:	MBL2 MS Standard C13 and N15-labeled recombinant protein (NP_000233)
Species:	Human
Expression Host:	HEK293
Expression cDNA Clone or AA Sequence:	RC210143
Predicted MW:	26.1 kDa
Protein Sequence:	>RC210143 protein sequence Red =Cloning site Green =Tags(s) MSLFPSLPLLLL SMVAASYSETVTCEDAQKTCPAVIACSSPGINGFPGKDRDGTGKEKGEPGQGLRGLQ GPPGKLGPPGNPSPGSPGPKGQKGDSPDGSSLAASERKALQTEMARIKKWLTFSLGKQVGNKFFL TNGEIMTFEKVKALCVKFQASVATPRNAAENGAIQNLIKEEAFLGITDEKTEGQFVDLTGNRLTYTNWNE GEPNNAGSDEDCVLLLNQWQNDVPCSTSHLAVCEFP TRTRPLEQKLI SEEDLAANDILDYKDDDDKV
Tag:	C-Myc/DDK
Purity:	> 80% as determined by SDS-PAGE and Coomassie blue staining
Concentration:	>0.05 µg/µL as determined by microplate BCA method
Labeling Method:	Labeled with [U- ¹³ C ₆ , ¹⁵ N ₄]-L-Arginine and [U- ¹³ C ₆ , ¹⁵ N ₂]-L-Lysine
Buffer:	25 mM Tris-HCl, 100 mM glycine, pH 7.3
Storage:	Store at -80°C. Avoid repeated freeze-thaw cycles.
Stability:	Stable for 3 months from receipt of products under proper storage and handling conditions.
RefSeq:	NP_000233
RefSeq Size:	3569
RefSeq ORF:	744
Synonyms:	COLEC1; HSMBPC; MBL; MBL2D; MBP; MBP-C; MBP1; MBPD
Locus ID:	4153
UniProt ID:	P11226



[View online »](#)

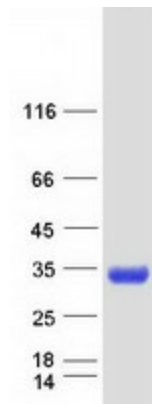
Cytogenetics: 10q21.1

Summary: This gene encodes the soluble mannose-binding lectin or mannose-binding protein found in serum. The protein encoded belongs to the collectin family and is an important element in the innate immune system. The protein recognizes and binds to mannose and N-acetylglucosamine on many microorganisms, including bacteria, yeast, and viruses including influenza virus, HIV and SARS-CoV. This binding activates the classical complement pathway. Deficiencies of this gene have been associated with susceptibility to autoimmune and infectious diseases. [provided by RefSeq, Jun 2020]

Protein Families: Druggable Genome

Protein Pathways: Complement and coagulation cascades

Product images:



Coomassie blue staining of purified MBL2 protein (Cat# [TP310143]). The protein was produced from HEK293T cells transfected with MBL2 cDNA clone (Cat# [RC210143]) using MegaTran 2.0 (Cat# [TT210002]).