

Product datasheet for PH310126

CELA2B (NM_015849) Human Mass Spec Standard

Product data:

Product Type:	Mass Spec Standards
Description:	CELA2B MS Standard C13 and N15-labeled recombinant protein (NP_056933)
Species:	Human
Expression Host:	HEK293
Expression cDNA Clone or AA Sequence:	RC210126
Predicted MW:	28.8 kDa
Protein Sequence:	>RC210126 protein sequence Red=Cloning site Green=Tags(s)

MIRTLTLLSTLVAGALSCGVSTYAPDMSRMLGGEEARPNSWPQVSLQYSSNGQWYHTCGGSLIANSWVLT
AAHCISSSGIYRVMLGQHNLVVAESGLAVSVSKIIVVHKDWNDSQVSKGNDIALKLANPVSLTDKIQLA
CLPPAGTILPNNYPCYVTGWRLQTNGALPDDLKQGRLLVVDYATCSSSGWWGSTVKTNMICAGGDGVIC
TCNGDSSGPLNCQASDGRWEVHGIGSLTSVLGCNYYYKPSIFTRVSNYNDWINSVIANN

TRTRPLEQKLI SEEDLAANDILDYKDDDDKV

Tag:	C-Myc/DDK
Purity:	> 80% as determined by SDS-PAGE and Coomassie blue staining
Concentration:	>0.05 µg/µL as determined by microplate BCA method
Labeling Method:	Labeled with [U- ¹³ C ₆ , ¹⁵ N ₄]-L-Arginine and [U- ¹³ C ₆ , ¹⁵ N ₂]-L-Lysine
Buffer:	25 mM Tris-HCl, 100 mM glycine, pH 7.3
Storage:	Store at -80°C. Avoid repeated freeze-thaw cycles.
Stability:	Stable for 3 months from receipt of products under proper storage and handling conditions.
RefSeq:	NP_056933
RefSeq Size:	941
RefSeq ORF:	807
Synonyms:	ELA2B
Locus ID:	51032
UniProt ID:	P08218 , Q6ISP9



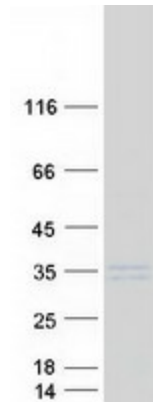
[View online »](#)

Cytogenetics: 1p36.21

Summary: Elastases form a subfamily of serine proteases that hydrolyze many proteins in addition to elastin. Humans have six elastase genes which encode the structurally similar proteins elastase 1, 2, 2A, 2B, 3A, and 3B. Like most of the human elastases, elastase 2B is secreted from the pancreas as a zymogen. In other species, elastase 2B has been shown to preferentially cleave proteins after leucine, methionine, and phenylalanine residues. [provided by RefSeq, Jul 2008]

Protein Families: Druggable Genome, Secreted Protein

Product images:



Coomassie blue staining of purified CELA2B protein (Cat# [TP310126]). The protein was produced from HEK293T cells transfected with CELA2B cDNA clone (Cat# [RC210126]) using MegaTran 2.0 (Cat# [TT210002]).