

## Product datasheet for PH310104

### RELM beta (RETNLB) (NM\_032579) Human Mass Spec Standard

#### Product data:

Product Type:	Mass Spec Standards
Description:	RETNLB MS Standard C13 and N15-labeled recombinant protein (NP_115968)
Species:	Human
Expression Host:	HEK293
Expression cDNA Clone or AA Sequence:	RC210104
Predicted MW:	11.7 kDa
Protein Sequence:	>RC210104 protein sequence Red=Cloning site Green=Tags(s)  MGPSSCLLLILIPLLQLINPGSTQCSLDSVMDKKIKDVLNSLEYSPPISKLLSCASVKSGRPPSSCPAG MAVTGCACGYGCGSWDVQLETTCHCQCSVVDWTTARCCHLT  TRTRPLEQKLISEEDLAANDILDYKDDDDKV
Tag:	C-Myc/DDK
Purity:	> 80% as determined by SDS-PAGE and Coomassie blue staining
Concentration:	>0.05 µg/µL as determined by microplate BCA method
Labeling Method:	Labeled with [U- 13C6, 15N4]-L-Arginine and [U- 13C6, 15N2]-L-Lysine
Buffer:	25 mM Tris-HCl, 100 mM glycine, pH 7.3
Storage:	Store at -80°C. Avoid repeated freeze-thaw cycles.
Stability:	Stable for 3 months from receipt of products under proper storage and handling conditions.
RefSeq:	<a href="#">NP_115968</a>
RefSeq Size:	594
RefSeq ORF:	333
Synonyms:	FIZZ1; FIZZ2; HXCP2; RELM-beta; RELMb; RELMbeta; XCP2
Locus ID:	84666
UniProt ID:	<a href="#">Q9BQ08</a>
Cytogenetics:	3q13.13

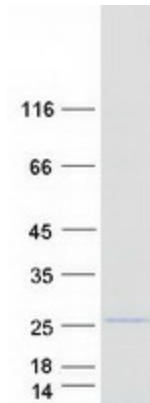


[View online »](#)

**Summary:** Probable hormone.[UniProtKB/Swiss-Prot Function]

**Protein Families:** Secreted Protein

**Product images:**



Coomassie blue staining of purified RETNLB protein (Cat# [TP310104]). The protein was produced from HEK293T cells transfected with RETNLB cDNA clone (Cat# [RC210104]) using MegaTran 2.0 (Cat# [TT210002]).