

## Product datasheet for PH310080

### RISC (SCPEP1) (NM\_021626) Human Mass Spec Standard

#### Product data:

|                                       |  |
|---------------------------------------|--|
| Product Type:                         | Mass Spec Standards  |
| Description:                          | SCPEP1 MS Standard C13 and N15-labeled recombinant protein (NP_067639) |
| Species:                              | Human  |
| Expression Host:                      | HEK293   |
| Expression cDNA Clone or AA Sequence: | RC210080   |
| Predicted MW:                         | 50.8 kDa   |
| Protein Sequence:                     | >RC210080 protein sequence<br>Red=Cloning site Green=Tags(s)           |

MELALRRSPVPRWLLLLPLLLGLNAGAVIDWPTEEGKEVWDYVTVRKDAYMFWWLYATNSCKNFSELPL  
VMWLQGGPGGSSTGFNFEEIGPLDSDLKPRKTTWLQAASLLFVDNPVGTGFSYVNGSGAYAKDLAMVAS  
DMMVLLKTFFSCHKEFQTVPFYIFSESYGGKMAAGIGLELYKAIQRGTIKCNFAGVALGDSWISPVDSVL  
SWGPLYLSMSLLEDKGLAEVSKVAEQVLNAVNGLYREATELWGKAEMIEQNTDGVNFYNILTKSTPTS  
TMESLEFTQSHLVCLCQRHVRHLQRDALSQLMNGPIRKKLKIIPEDQSWGQATNVFVNMEEDFMKPV  
SIVDELLEAGINVTYVYNGQLDLIVDTMGQEAWRKLLKWPPELKFSQLKWKALYSDPKSLETSAFVKSYKN  
LAFYWILKAGHMVPSDQGMALKMMRLVTQQE

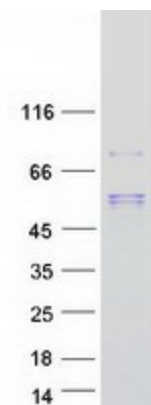
TRTRPLEQKLISEEDLAANDILDYKDDDDKV

|                  |  |
|------------------|--|
| Tag:             | C-Myc/DDK  |
| Purity:          | > 80% as determined by SDS-PAGE and Coomassie blue staining  |
| Concentration:   | >0.05 µg/µL as determined by microplate BCA method   |
| Labeling Method: | Labeled with [U- <sup>13</sup> C <sub>6</sub> , <sup>15</sup> N <sub>4</sub> ]-L-Arginine and [U- <sup>13</sup> C <sub>6</sub> , <sup>15</sup> N <sub>2</sub> ]-L-Lysine |
| Buffer:          | 25 mM Tris-HCl, 100 mM glycine, pH 7.3   |
| Storage:         | Store at -80°C. Avoid repeated freeze-thaw cycles.   |
| Stability:       | Stable for 3 months from receipt of products under proper storage and handling conditions.   |
| RefSeq:          | <u><a href="#">NP_067639</a></u>   |
| RefSeq Size:     | 1952   |
| RefSeq ORF:      | 1356   |
| Synonyms:        | HSCP1; RISC  |



[View online »](#)

|                   |   |
|-------------------|---|
| Locus ID:         | 59342   |
| UniProt ID:       | <a href="#">Q9HB40</a> , <a href="#">Q9H2J9</a>   |
| Cytogenetics:     | 17q22   |
| Summary:          | May be involved in vascular wall and kidney homeostasis.[UniProtKB/Swiss-Prot Function] |
| Protein Families: | Druggable Genome, Protease, Secreted Protein  |

**Product images:**

Coomassie blue staining of purified SCPEP1 protein (Cat# [TP310080]). The protein was produced from HEK293T cells transfected with SCPEP1 cDNA clone (Cat# [RC210080]) using MegaTran 2.0 (Cat# [TT210002]).