

Product datasheet for PH310062

PPM1J (NM_005167) Human Mass Spec Standard

Product data:

Product Type:	Mass Spec Standards
Description:	PPM1J MS Standard C13 and N15-labeled recombinant protein (NP_005158)
Species:	Human
Expression Host:	HEK293
Expression cDNA Clone or AA Sequence:	RC210062
Predicted MW:	54.8 kDa
Protein Sequence:	>RC210062 protein sequence Red=Cloning site Green=Tags(s)

MLNRVRSVAHVLVSSGGAPPRPKSPDLPNAASAPPAAPAAPEAPRSPPAKAGSGSATPAKAVEARASFSRP
TFLQLSPGGLRRADDHAGRAVQSPDTRRLLPWSTGYAEVINAGKSRHNEDQACCEVVYVEGRRSVTGVP
REPSRQQLCFYIWGLFDGHAGGAAEMASRLLRHIREQLKDLVEILQDPSPPLCLPTTPGTPDSSDP
SHLLGPQSCWSSQKEVSHESLVVGAIENAFQLMDEQMARERRGHQVEGGCCALVVIYLLGKVVYVANAGDS
RAIIVRNGEIIIPMSREFTPETERQLQLLGFLLKPELLGSEFTHLEFPRRVLKELGQRMLYRDQNMGTGWA
YKKIELEDLRFPLVCGEGKKARVMATIGVTRGLGDHSLKVCSSSTLPKIPFLSCFPEVRYVYDLTQYEHCPD
DVLVLGTDGLWDVTTDCEVAATVDRVLSAYEPNDHSRYTALAQALVVGARGTPRDRGWRLPNNKLGSGDD
ISVFVIPLGGPGSYS

TRTRPLEQKLISEEDLAANDILDYKDDDDKV

Tag:	C-Myc/DDK
Purity:	> 80% as determined by SDS-PAGE and Coomassie blue staining
Concentration:	>0.05 µg/µL as determined by microplate BCA method
Labeling Method:	Labeled with [U- ¹³ C ₆ , ¹⁵ N ₄]-L-Arginine and [U- ¹³ C ₆ , ¹⁵ N ₂]-L-Lysine
Buffer:	25 mM Tris-HCl, 100 mM glycine, pH 7.3
Storage:	Store at -80°C. Avoid repeated freeze-thaw cycles.
Stability:	Stable for 3 months from receipt of products under proper storage and handling conditions.
RefSeq:	<u>NP_005158</u>
RefSeq Size:	1762
RefSeq ORF:	1515



[View online »](#)

Synonyms: PP2C-zeta; PP2CZ; PP2Czeta; PPP2CZ

Locus ID: 333926

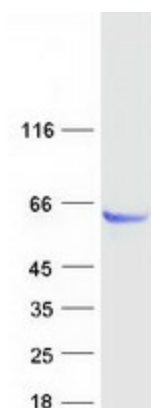
UniProt ID: [Q5JR12](#)

Cytogenetics: 1p13.2

Summary: This gene encodes the serine/threonine protein phosphatase. The mouse homolog of this gene apparently belongs to the protein phosphatase 2C family of genes. The exact function of this gene is not yet known. [provided by RefSeq, Jul 2008]

Protein Families: Phosphatase

Product images:



Coomassie blue staining of purified PPM1J protein (Cat# [TP310062]). The protein was produced from HEK293T cells transfected with PPM1J cDNA clone (Cat# [RC210062]) using MegaTran 2.0 (Cat# [TT210002]).