

Product datasheet for PH310052

Galectin 7 (LGALS7) (NM_002307) Human Mass Spec Standard

Product data:

Product Type:	Mass Spec Standards
Description:	LGALS7 MS Standard C13 and N15-labeled recombinant protein (NP_002298)
Species:	Human
Expression Host:	HEK293
Expression cDNA Clone or AA Sequence:	RC210052
Predicted MW:	14.9 kDa
Protein Sequence:	>RC210052 representing NM_002307 Red=Cloning site Green=Tags(s) MSNVPHKSSLPEGIRPGTVLRIRGLVPPNASRFHVNLLCGEEQGSDAALHFNPRLDTSEVVFNSKEQGSW GREERGPVFPFQRGQPFVLIASDDGFKAVVGDAQYHHRHRLPLARVRLVEVGGDVQLDSVRIF TRTRPLEQKLISEEDLAANDILDYKDDDDKV
Tag:	C-Myc/DDK
Purity:	> 80% as determined by SDS-PAGE and Coomassie blue staining
Concentration:	>0.05 µg/µL as determined by microplate BCA method
Labeling Method:	Labeled with [U- 13C6, 15N4]-L-Arginine and [U- 13C6, 15N2]-L-Lysine
Buffer:	25 mM Tris-HCl, 100 mM glycine, pH 7.3
Storage:	Store at -80°C. Avoid repeated freeze-thaw cycles.
Stability:	Stable for 3 months from receipt of products under proper storage and handling conditions.
RefSeq:	NP_002298
RefSeq Size:	498
RefSeq ORF:	408
Synonyms:	GAL7; LGALS7A
Locus ID:	3963
UniProt ID:	P47929
Cytogenetics:	19q13.2



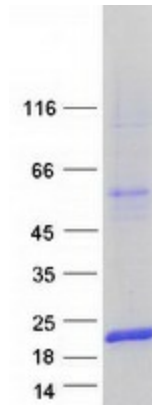
[View online »](#)

Summary:

The galectins are a family of beta-galactoside-binding proteins implicated in modulating cell-cell and cell-matrix interactions. Differential and in situ hybridization studies indicate that this lectin is specifically expressed in keratinocytes and found mainly in stratified squamous epithelium. A duplicate copy of this gene (GeneID:653499) is found adjacent to, but on the opposite strand on chromosome 19. [provided by RefSeq, Jul 2008]

Protein Families:

Secreted Protein

Product images:

Coomassie blue staining of purified LGALS7 protein (Cat# [TP310052]). The protein was produced from HEK293T cells transfected with LGALS7 cDNA clone (Cat# [RC210052]) using MegaTran 2.0 (Cat# [TT210002]).