

Product datasheet for PH310051

Pepsinogen II (PGC) (NM_002630) Human Mass Spec Standard

Product data:

Product Type:	Mass Spec Standards
Description:	PGC MS Standard C13 and N15-labeled recombinant protein (NP_002621)
Species:	Human
Expression Host:	HEK293
Expression cDNA Clone or AA Sequence:	RC210051
Predicted MW:	42.4 kDa
Protein Sequence:	>RC210051 protein sequence Red=Cloning site Green=Tags(s)
	MKWMVVVLVCLQLLEAAVVKVPLKFKSIRETMKEKGLLGEFLRTHKYDPAWKYRFGDLSVTYEPMAYMD AAFYGEISIGTPPQNFLVLFDTGSSNLWVPSVYCQSQACTSHSRFNPSESSTYSTNGQTFSLQYGSGLT GFFGYDRTLTVQSIQVFNQEFGLSENEPGTNFVYAQFDGIMGLAYPALSVDEATTAMQGMVQEGALTSVPF SVYLSNQGGSSGAVVFGGVDSSLYTGQIYWAPVTQELYWQIGIEEFLIGGQASGWCSEGCQAIIVDTGTS LLTVPQQYMSALLQATGAQEDEYQFLVNCNSIQNLPSLTFIINGVEFPLPPSSYILSNNGYCTVGVEPT YLSQNGQPLWILGDVFLRSYYSVYDLGNNRVGFATAA
	TRTRPLEQKLISEEDLAANDILDYKDDDDKV
Tag:	C-Myc/DDK
Purity:	> 80% as determined by SDS-PAGE and Coomassie blue staining
Concentration:	>0.05 µg/µL as determined by microplate BCA method
Labeling Method:	Labeled with [U- ¹³ C ₆ , ¹⁵ N ₄]-L-Arginine and [U- ¹³ C ₆ , ¹⁵ N ₂]-L-Lysine
Buffer:	25 mM Tris-HCl, 100 mM glycine, pH 7.3
Storage:	Store at -80°C. Avoid repeated freeze-thaw cycles.
Stability:	Stable for 3 months from receipt of products under proper storage and handling conditions.
RefSeq:	NP_002621
RefSeq Size:	1392
RefSeq ORF:	1164
Synonyms:	PEPC; PGII
Locus ID:	5225



[View online »](#)

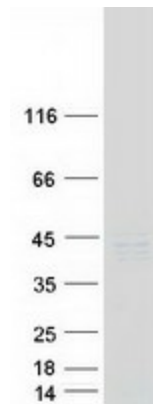
UniProt ID: [P20142](#)

Cytogenetics: 6p21.1

Summary: This gene encodes an aspartic proteinase that belongs to the peptidase family A1. The encoded protein is a digestive enzyme that is produced in the stomach and constitutes a major component of the gastric mucosa. This protein is also secreted into the serum. This protein is synthesized as an inactive zymogen that includes a highly basic prosegment. This enzyme is converted into its active mature form at low pH by sequential cleavage of the prosegment that is carried out by the enzyme itself. Polymorphisms in this gene are associated with susceptibility to gastric cancers. Serum levels of this enzyme are used as a biomarker for certain gastric diseases including Helicobacter pylori related gastritis. Alternate splicing results in multiple transcript variants. A pseudogene of this gene is found on chromosome 1. [provided by RefSeq, Oct 2009]

Protein Families: Protease, Secreted Protein

Product images:



Coomassie blue staining of purified PGC protein (Cat# [TP310051]). The protein was produced from HEK293T cells transfected with PGC cDNA clone (Cat# [RC210051]) using MegaTran 2.0 (Cat# [TT210002]).