

## Product datasheet for PH310044

### TCP1 theta (CCT8) (NM\_006585) Human Mass Spec Standard

#### Product data:

Product Type:	Mass Spec Standards
Description:	CCT8 MS Standard C13 and N15-labeled recombinant protein (NP_006576)
Species:	Human
Expression Host:	HEK293
Expression cDNA Clone or AA Sequence:	RC210044
Predicted MW:	59.6 kDa
Protein Sequence:	>RC210044 protein sequence Red=Cloning site Green=Tags(s)

MALHVPKAPGFAQMLKEGAKHFSGLEEAVYRNIQACKELAQTRRTAYGPNMNMKVINHLEKLFVTNDAA  
TILRELEVQHPAAKMIVMASHMQEQEVGDGTNFVLFVAGALLELAEELLRIGLSVSEVIEGYEIACRKAH  
EILPNLVCCSAKNLRDIDEVSSLLRTSISMSKQYGENVFLAKLIAQACVSIFPDSGHFNVDNIRVCKILGS  
GISSSSVLHGMVFKKETEGDVTSVKDAKIAVYSCFPDGMITETKGTVLIKTAEELMNFSGKEENLMDAQV  
KAIADTGANVVVTGGKVADMALHYANKYNIMLVRNSKWDLRRLCKTVGATALPRLTPPVLEEMGHCDVS  
YLSEVGDQVVVFKHEKEDGAISTIVLRGSTDNLMDIERAVDDGVNTFKVLTRDKRLVPGGGATEIELA  
KQITSYGETCPGLEQYAIKKFAEAFEAI PRALAENSGVKANEVISKLYAVHQEGNKVGLDIEAEVPAVK  
DMLEAGILDITYLGKYWAIKLATNAAVTVLRVDQIIMAKPAGGPKPPSGKKDWDQND

TRTRPLEQKLI SEEDLAANDILDYKDDDDKV

Tag:	C-Myc/DDK
Purity:	> 80% as determined by SDS-PAGE and Coomassie blue staining
Concentration:	>0.05 µg/µL as determined by microplate BCA method
Labeling Method:	Labeled with [U- 13C6, 15N4]-L-Arginine and [U- 13C6, 15N2]-L-Lysine
Buffer:	25 mM Tris-HCl, 100 mM glycine, pH 7.3
Storage:	Store at -80°C. Avoid repeated freeze-thaw cycles.
Stability:	Stable for 3 months from receipt of products under proper storage and handling conditions.
RefSeq:	<u><a href="#">NP_006576</a></u>
RefSeq Size:	2007
RefSeq ORF:	1644



[View online »](#)

**Synonyms:** C21orf112; Cctq; D21S246; PRED71

**Locus ID:** 10694

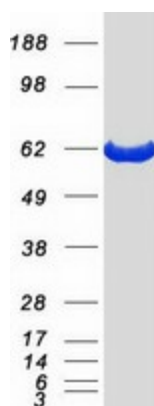
**UniProt ID:** [P50990](#)

**Cytogenetics:** 21q21.3

**Summary:** This gene encodes the theta subunit of the CCT chaperonin, which is abundant in the eukaryotic cytosol and may be involved in the transport and assembly of newly synthesized proteins. Alternative splicing results in multiple transcript variants of this gene. A pseudogene related to this gene is located on chromosome 1. [provided by RefSeq, Sep 2013]

**Protein Families:** Druggable Genome

### Product images:



Coomassie blue staining of purified CCT8 protein (Cat# [TP310044]). The protein was produced from HEK293T cells transfected with CCT8 cDNA clone (Cat# [RC210044]) using MegaTran 2.0 (Cat# [TT210002]).