

## Product datasheet for PH310042

### KLF2 (NM\_016270) Human Mass Spec Standard

#### Product data:

Product Type:	Mass Spec Standards
Description:	KLF2 MS Standard C13 and N15-labeled recombinant protein (NP_057354)
Species:	Human
Expression Host:	HEK293
Expression cDNA Clone or AA Sequence:	RC210042
Predicted MW:	37.4 kDa
Protein Sequence:	>RC210042 protein sequence Red=Cloning site Green=Tags(s)

MALSEPIILPSFSTFASPCRERGLQERWPAEPESSGGTDDDLNSVLDLILSMGLDGLGAEAAPEPPPPPP  
PAFYYPEPGAPPYSAPAGGLVSELLRPELDAPPGPALHGRFLLAPPGRVKAEPPEADGGGGYGAPGL  
TRGPRGLKREGAPGPAASCMRGPGRPPPPDTPPLSPDGPARLPAPGPRASFPPFGGPGFGAPGGLH  
YAPPAPPAFGLFDDAAAAAALGLAPPAARGLLTPPASPLELLEAKPKRGRRSWPRKRTATHTCSYAGCG  
KTYTKSSHLKAHLRHTHTGEKPYHCNWDGCGWKFARSDELTRHYRKHTGHRPFQCHLCDRAFSRSDHLALH  
MKRHM

TRTRPLEQKLISEEDLAANDILDYKDDDDKV

Tag:	C-Myc/DDK
Purity:	> 80% as determined by SDS-PAGE and Coomassie blue staining
Concentration:	>0.05 µg/µL as determined by microplate BCA method
Labeling Method:	Labeled with [U- <sup>13</sup> C <sub>6</sub> , <sup>15</sup> N <sub>4</sub> ]-L-Arginine and [U- <sup>13</sup> C <sub>6</sub> , <sup>15</sup> N <sub>2</sub> ]-L-Lysine
Buffer:	25 mM Tris-HCl, 100 mM glycine, pH 7.3
Storage:	Store at -80°C. Avoid repeated freeze-thaw cycles.
Stability:	Stable for 3 months from receipt of products under proper storage and handling conditions.
RefSeq:	<a href="#">NP_057354</a>
RefSeq Size:	1655
RefSeq ORF:	1065
Synonyms:	LKLF
Locus ID:	10365



[View online »](#)

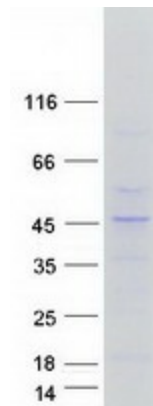
UniProt ID: [Q9Y5W3](#)

Cytogenetics: 19p13.11

**Summary:** This gene encodes a protein that belongs to the Kruppel family of transcription factors. The encoded zinc finger protein is expressed early in mammalian development and is found in many different cell types. The protein acts to bind the CACCC box found in the promoter of target genes to activate their transcription. It plays a role in many processes during development and disease including adipogenesis, embryonic erythropoiesis, epithelial integrity, inflammation and t-cell viability. [provided by RefSeq, Mar 2017]

**Protein Families:** Transcription Factors

### Product images:



Coomassie blue staining of purified KLF2 protein (Cat# [TP310042]). The protein was produced from HEK293T cells transfected with KLF2 cDNA clone (Cat# [RC210042]) using MegaTran 2.0 (Cat# [TT210002]).