

Product datasheet for PH310033

RPS24 (NM_033022) Human Mass Spec Standard

Product data:

Product Type:	Mass Spec Standards
Description:	RPS24 MS Standard C13 and N15-labeled recombinant protein (NP_148982)
Species:	Human
Expression Host:	HEK293
Expression cDNA Clone or AA Sequence:	RC210033
Predicted MW:	15.1 kDa
Protein Sequence:	>RC210033 protein sequence Red =Cloning site Green =Tags(s) MNDTVTIRTRKFMNRLLRKQKQVIDVLHPGKATVPKTEIREKLAKMYKTPDVIFVFGFRTHFGGKTT GFGMIYDSLIDYAKKNEPKHRLARHGLYEKKTSRKQRKERKNRMKKVRGTAKANVGAGKK TRTRPLEQKLISEEDLAANDILDYKDDDDKV
Tag:	C-Myc/DDK
Purity:	> 80% as determined by SDS-PAGE and Coomassie blue staining
Concentration:	>0.05 µg/µL as determined by microplate BCA method
Labeling Method:	Labeled with [U- 13C6, 15N4]-L-Arginine and [U- 13C6, 15N2]-L-Lysine
Buffer:	25 mM Tris-HCl, 100 mM glycine, pH 7.3
Storage:	Store at -80°C. Avoid repeated freeze-thaw cycles.
Stability:	Stable for 3 months from receipt of products under proper storage and handling conditions.
RefSeq:	NP_148982
RefSeq Size:	671
RefSeq ORF:	390
Synonyms:	DBA3; eS24; S24
Locus ID:	6229
UniProt ID:	P62847
Cytogenetics:	10q22.3



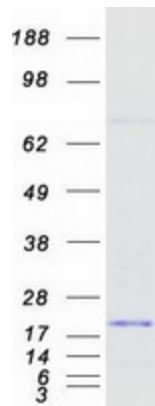
[View online »](#)

Summary:

Ribosomes, the organelles that catalyze protein synthesis, consist of a small 40S subunit and a large 60S subunit. Together these subunits are composed of 4 RNA species and approximately 80 structurally distinct proteins. This gene encodes a ribosomal protein that is a component of the 40S subunit. The protein belongs to the S24E family of ribosomal proteins. It is located in the cytoplasm. Multiple transcript variants encoding different isoforms have been found for this gene. As is typical for genes encoding ribosomal proteins, there are multiple processed pseudogenes of this gene dispersed through the genome. Mutations in this gene result in Diamond-Blackfan anemia. [provided by RefSeq, Nov 2008]

Protein Pathways:

Ribosome

Product images:

Coomassie blue staining of purified RPS24 protein (Cat# [TP310033]). The protein was produced from HEK293T cells transfected with RPS24 cDNA clone (Cat# [RC210033]) using MegaTran 2.0 (Cat# [TT210002]).