

## Product datasheet for PH310026

### CCL3 (NM\_002983) Human Mass Spec Standard

#### Product data:

Product Type:	Mass Spec Standards
Description:	CCL3 MS Standard C13 and N15-labeled recombinant protein (NP_002974)
Species:	Human
Expression Host:	HEK293
Expression cDNA Clone or AA Sequence:	RC210026
Predicted MW:	10.1 kDa
Protein Sequence:	>RC210026 protein sequence <b>Red</b> =Cloning site <b>Green</b> =Tags(s)  MQVSTAALAVLLCTMALCNQFSASLAADTPTACCFSYTSRQIPQNFADYFETSSQCSKPGVIFLTKRSR QVCADPSEEWQKYVSDLELSA  <b>TRTRPLEQKLISEEDLAANDILDYKDDDDKV</b>
Tag:	C-Myc/DDK
Purity:	> 80% as determined by SDS-PAGE and Coomassie blue staining
Concentration:	>0.05 µg/µL as determined by microplate BCA method
Labeling Method:	Labeled with [U- <sup>13</sup> C <sub>6</sub> , <sup>15</sup> N <sub>4</sub> ]-L-Arginine and [U- <sup>13</sup> C <sub>6</sub> , <sup>15</sup> N <sub>2</sub> ]-L-Lysine
Buffer:	25 mM Tris-HCl, 100 mM glycine, pH 7.3
Storage:	Store at -80°C. Avoid repeated freeze-thaw cycles.
Stability:	Stable for 3 months from receipt of products under proper storage and handling conditions.
RefSeq:	<a href="#">NP_002974</a>
RefSeq Size:	813
RefSeq ORF:	276
Synonyms:	G0S19-1; LD78ALPHA; MIP-1-alpha; MIP1A; SCYA3
Locus ID:	6348
UniProt ID:	<a href="#">P10147</a> , <a href="#">A0N0R1</a>
Cytogenetics:	17q12



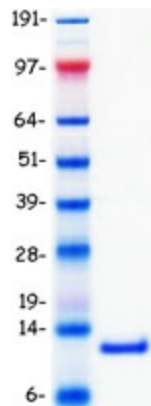
[View online »](#)

**Summary:** This locus represents a small inducible cytokine. The encoded protein, also known as macrophage inflammatory protein 1 alpha, plays a role in inflammatory responses through binding to the receptors CCR1, CCR4 and CCR5. Polymorphisms at this locus may be associated with both resistance and susceptibility to infection by human immunodeficiency virus type 1.[provided by RefSeq, Sep 2010]

**Protein Families:** Druggable Genome, Secreted Protein

**Protein Pathways:** Chemokine signaling pathway, Cytokine-cytokine receptor interaction, Toll-like receptor signaling pathway

### Product images:



Coomassie blue staining of purified CCL3 protein (Cat# [TP310026]). The protein was produced from HEK293T cells transfected with CCL3 cDNA clone (Cat# [RC210026]) using MegaTran 2.0 (Cat# [TT210002]).