

Product datasheet for PH310013

IL2 (NM_000586) Human Mass Spec Standard

Product data:

Product Type:	Mass Spec Standards
Description:	IL2 MS Standard C13 and N15-labeled recombinant protein (NP_000577)
Species:	Human
Expression Host:	HEK293
Expression cDNA Clone or AA Sequence:	RC210013
Predicted MW:	17.6 kDa
Protein Sequence:	>RC210013 protein sequence Red =Cloning site Green =Tags(s) MYRMQLLSICIALSLALVTNSAPTSSTKKTQLQLEHLLLDLQMILNGINNYKNPKLTRMLTFKFYMPKKA TELKHLQCLEEELKPLEEVLNLAQSKNFHLRPRDLISNINNVIVLELKGSETTFMCEYADETATIVEFLNR WITFCQSIISTLT TRTRP LEQKLISEEDLAANDILDYKDDDDKV
Tag:	C-Myc/DDK
Purity:	> 80% as determined by SDS-PAGE and Coomassie blue staining
Concentration:	50 ug/ml as determined by BCA
Labeling Method:	Labeled with [U- ¹³ C ₆ , ¹⁵ N ₄]-L-Arginine and [U- ¹³ C ₆ , ¹⁵ N ₂]-L-Lysine
Buffer:	100 mM glycine, 25 mM Tris-HCl, pH 7.3. Store at -80°C. Avoid repeated freeze-thaw cycles. Stable for 3 months from receipt of products under proper storage and handling conditions.
RefSeq:	NP_000577
RefSeq Size:	822
RefSeq ORF:	459
Synonyms:	IL-2; lymphokine; TCGF
Locus ID:	3558
UniProt ID:	P60568 , Q0GK43
Cytogenetics:	4q27



[View online »](#)

Summary:

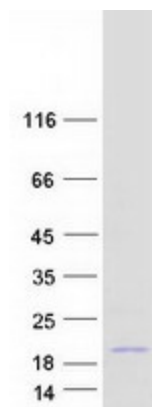
This gene is a member of the interleukin 2 (IL2) cytokine subfamily which includes IL4, IL7, IL9, IL15, IL21, erythropoietin, and thrombopoietin. The protein encoded by this gene is a secreted cytokine produced by activated CD4+ and CD8+ T lymphocytes, that is important for the proliferation of T and B lymphocytes. The receptor of this cytokine (IL2R) is a heterotrimeric protein complex whose gamma chain is also shared by IL4 and IL7. The expression of this gene in mature thymocytes is monoallelic, which represents an unusual regulatory mode for controlling the precise expression of a single gene. The targeted disruption of a similar gene in mice leads to ulcerative colitis-like disease, which suggests an essential role of this gene in the immune response to antigenic stimuli. [provided by RefSeq, Sep 2020]

Protein Families:

Druggable Genome, Secreted Protein

Protein Pathways:

Allograft rejection, Autoimmune thyroid disease, Cytokine-cytokine receptor interaction, Graft-versus-host disease, Jak-STAT signaling pathway, T cell receptor signaling pathway, Type I diabetes mellitus

Product images:

Coomassie blue staining of purified IL2 protein (Cat# [TP310013]). The protein was produced from HEK293T cells transfected with IL2 cDNA clone (Cat# [RC210013]) using MegaTran 2.0 (Cat# [TT210002]).