

Product datasheet for PH310005

AGL (NM_000642) Human Mass Spec Standard

Product data:

| | |
|---------------------------------------|---|
| Product Type: | Mass Spec Standards |
| Description: | AGL MS Standard C13 and N15-labeled recombinant protein (NP_000633) |
| Species: | Human |
| Expression Host: | HEK293 |
| Expression cDNA Clone or AA Sequence: | RC210005 |
| Predicted MW: | 174.6 kDa |
| Protein Sequence: | >RC210005 representing NM_000642 Red=Cloning site Green=Tags(s) |

MGHSKQIRILLLNEMEKLEKTLFRLEQGYELQFRLGPTLQGKAVTVYTNYPFGETFNREKFRSLDWENP
TEREDDSKYCKLNLQQSGSFQYYFLQGNEKSGGYIVVDPILRVGADNHVLPDVCVTLQTFLLAKCLGPF
DEWESRLRVAKESGYNMIHFTPLQTLGLSRSCYSLANQLELNPDRSRPNRKYTWNDVQGLVEKLLKEWNV
ICITDVVYNHTAANSKWIQEHPECAYNLVNSPHLKPWVLDRALWRFSCDVAEGYKEKGPAL IENDHH
MNSIRKIIWEDI FPKLKLWEFFQVDVNKAVEQFRRLTQENRRVTKSDPNQHLTIIQDPEYRRFGCTVDM
NIALTTFIPHDKGPAAIEECCNWFHKRMEELNSEKHRLINYHQEQAVNCLLGNVYERLAGHGPKLGPVT
RKHPLVTRYFTFPFEEIDF SMEESMIHLPNKACFLMAHNGWVMGDDPLRNFAEPGSEVYL RRELICWGDS
VKLRYGNKPEDCPYLWAHMKKYTEITATYFQGVRLDNCHSTPLHVAEYMLDAARNLQPNLYVVAELFTGS
EDLDNVFVTRLGISSLIREAMSAYNSHEEGRLVYRYGGEPVGSFVQPCLRPLMPAIAHALFMDITHDNEC
PIVHRSAYDALPSTTIVSMACCASGSTRGYDELVPHQISVVSEERFYTKWNPEALPSNTGEVNFQSGIIA
ARCAISKLHQELGAKGFIQVYVDQVDEIVAVTRHSPSIHQSVVAVSRTAFRNPKTSFYSKEVPQMCIPG
KIEEVVLEARTIERNTKPYRKDENSINGTPDITVEIREHIQLNESKIVKQAGVATKGPNEYIQEIEFENL
SPGSVIIIFRVSLDPAHQAVGILRNHLTQFSPHFKSGSLAVDNADPILKIPFASLASRLTLAELNQLYR
CESEEKEDGGGCYDIPNWSALKYAGLQGLMSVLAERPKNDLGHFPCNNLRSGDWMIDYVSNRLISRSQT
IAEVGKWLQAMFFYLKQIPRYLIPCYFDAILIGAYTTLLDTAWKQMSFVQNGSTFVKHLSLGSVQLCGV
GKFPSPILSPALMDVPYRLNEITKEKEQCCVSLAAGLPHFSSGIFRCWGRDTFIALRGILLITGRYVEA
RNIIILAFAGTLRHGLIPNLLGEGYARYNCRDAVWWWLQCIQDYCKMVPNGLDILKCPVSRMYPTDSDSAP
LPAGTLDQPLFEVIQEAMQKHMQGIQFRERNAGPQIDRNMKDEGFNITAGVDEETGFVYGGNRFNCGTWM
DKMGESDRARNRGIPATPRDGS AVEIVGLSKSAVRWLELLESKKNIFPYHEVTVKRHGKAIKVSYDEWNRK
IQDNFEKLFHVSEDPDLNEKHPNLVHKRGIYKDSYGASSPWCDYQLRPNFTIAMVVAPELFTTEKAWKA
LEIAEKLLGPLGMKTLDPDDMVYCGIYDNALDNDNYNLAKGFNYHQPEWLWPIGYFLRAKL YFSRLMG
PETTAKTIVLVKNVLSRHYVHLERSPWKGLPEL TNENAQYCPFCSETQAWSIATILETL YDL

TRTRPLEQKLISEEDLAANDILDYKDDDDKV

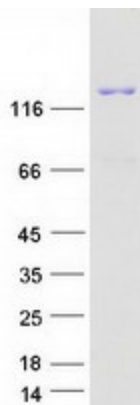
| | |
|---------|---|
| Tag: | C-Myc/DDK |
| Purity: | > 80% as determined by SDS-PAGE and Coomassie blue staining |



[View online »](#)

| | |
|-------------------|--|
| Concentration: | >0.05 µg/µL as determined by microplate BCA method |
| Labeling Method: | Labeled with [U- ¹³ C ₆ , ¹⁵ N ₄]-L-Arginine and [U- ¹³ C ₆ , ¹⁵ N ₂]-L-Lysine |
| Buffer: | 25 mM Tris-HCl, 100 mM glycine, pH 7.3 |
| Storage: | Store at -80°C. Avoid repeated freeze-thaw cycles. |
| Stability: | Stable for 3 months from receipt of products under proper storage and handling conditions. |
| RefSeq: | NP_000633 |
| RefSeq Size: | 7371 |
| RefSeq ORF: | 4596 |
| Synonyms: | GDE |
| Locus ID: | 178 |
| UniProt ID: | P35573 , A0A0S2A4E4 |
| Cytogenetics: | 1p21.2 |
| Summary: | This gene encodes the glycogen debrancher enzyme which is involved in glycogen degradation. This enzyme has two independent catalytic activities which occur at different sites on the protein: a 4-alpha-glucotransferase activity and a amylo-1,6-glucosidase activity. Mutations in this gene are associated with glycogen storage disease although a wide range of enzymatic and clinical variability occurs which may be due to tissue-specific alternative splicing. Alternatively spliced transcripts encoding different isoforms have been described. [provided by RefSeq, Jul 2008] |
| Protein Families: | Druggable Genome |
| Protein Pathways: | Metabolic pathways, Starch and sucrose metabolism |

Product images:



Coomassie blue staining of purified AGL protein (Cat# [TP310005]). The protein was produced from HEK293T cells transfected with AGL cDNA clone (Cat# [RC210005]) using MegaTran 2.0 (Cat# [TT210002]).