

Product datasheet for PH310002

S100A12 (NM_005621) Human Mass Spec Standard

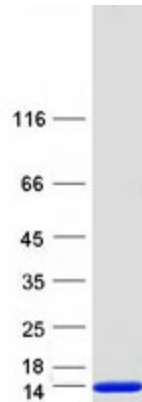
Product data:

Product Type:	Mass Spec Standards
Description:	S100A12 MS Standard C13 and N15-labeled recombinant protein (NP_005612)
Species:	Human
Expression Host:	HEK293
Expression cDNA Clone or AA Sequence:	RC210002
Predicted MW:	10.6 kDa
Protein Sequence:	>RC210002 protein sequence Red=Cloning site Green=Tags(s) MTKLEEHLLEGIVNIFHQYSVRKGHFDLTLSKGELKQLLTKELANTIKNIKDKAVIDEIFQGLDANQDEQVD FQEFISLVIAIALKAAHYHTHKE TRTRPLEQKLISEEDLAANDILDYKDDDDKV
Tag:	C-Myc/DDK
Purity:	> 80% as determined by SDS-PAGE and Coomassie blue staining
Concentration:	>0.05 µg/µL as determined by microplate BCA method
Labeling Method:	Labeled with [U- ¹³ C ₆ , ¹⁵ N ₄]-L-Arginine and [U- ¹³ C ₆ , ¹⁵ N ₂]-L-Lysine
Buffer:	25 mM Tris-HCl, 100 mM glycine, pH 7.3
Storage:	Store at -80°C. Avoid repeated freeze-thaw cycles.
Stability:	Stable for 3 months from receipt of products under proper storage and handling conditions.
RefSeq:	NP_005612
RefSeq Size:	466
RefSeq ORF:	276
Synonyms:	CAAF1; CAGC; CGRP; ENRAGE; MRP-6; MRP6; p6
Locus ID:	6283
UniProt ID:	P80511
Cytogenetics:	1q21.3


[View online »](#)

Summary:

The protein encoded by this gene is a member of the S100 family of proteins containing 2 EF-hand calcium-binding motifs. S100 proteins are localized in the cytoplasm and/or nucleus of a wide range of cells, and involved in the regulation of a number of cellular processes such as cell cycle progression and differentiation. S100 genes include at least 13 members which are located as a cluster on chromosome 1q21. This protein is proposed to be involved in specific calcium-dependent signal transduction pathways and its regulatory effect on cytoskeletal components may modulate various neutrophil activities. The protein includes an antimicrobial peptide which has antibacterial activity. [provided by RefSeq, Nov 2014]

Product images:


Coomassie blue staining of purified S100A12 protein (Cat# [TP310002]). The protein was produced from HEK293T cells transfected with S100A12 cDNA clone (Cat# [RC210002]) using MegaTran 2.0 (Cat# [TT210002]).