

Product datasheet for PH309992

POLD4 (NM_021173) Human Mass Spec Standard

Product data:

Product Type:	Mass Spec Standards
Description:	POLD4 MS Standard C13 and N15-labeled recombinant protein (NP_066996)
Species:	Human
Expression Host:	HEK293
Expression cDNA Clone or AA Sequence:	RC209992
Predicted MW:	12.4 kDa
Protein Sequence:	>RC209992 protein sequence Red=Cloning site Green=Tags(s) MGRKRLITDSYPVVKRREGPAGHSGELAPELGEEPQPRDEEEAELELLRQFDLAWQYGPCTGITRLQRW CRAKHMGLEPPPEVWQVLKTHPGDPRFQCSSLWHL YPL TRTRPLEQKLISEEDLAANDILDYKDDDDKV
Tag:	C-Myc/DDK
Purity:	> 80% as determined by SDS-PAGE and Coomassie blue staining
Concentration:	>0.05 µg/µL as determined by microplate BCA method
Labeling Method:	Labeled with [U- 13C6, 15N4]-L-Arginine and [U- 13C6, 15N2]-L-Lysine
Buffer:	25 mM Tris-HCl, 100 mM glycine, pH 7.3
Storage:	Store at -80°C. Avoid repeated freeze-thaw cycles.
Stability:	Stable for 3 months from receipt of products under proper storage and handling conditions.
RefSeq:	NP_066996
RefSeq Size:	1751
RefSeq ORF:	321
Synonyms:	p12; POLDS
Locus ID:	57804
UniProt ID:	Q9HCU8 , A0A024R5D7 , Q6NSD7
Cytogenetics:	11q13.2



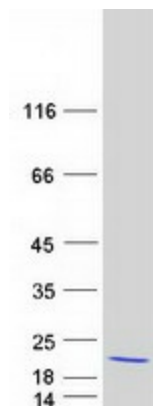
[View online »](#)

Summary:

This gene encodes the smallest subunit of DNA polymerase delta. DNA polymerase delta possesses both polymerase and 3' to 5' exonuclease activity and plays a critical role in DNA replication and repair. The encoded protein enhances the activity of DNA polymerase delta and plays a role in fork repair and stabilization through interactions with the DNA helicase Bloom syndrome protein. Alternatively spliced transcript variants encoding multiple isoforms have been observed for this gene. [provided by RefSeq, Mar 2012]

Protein Pathways:

Base excision repair, DNA replication, Homologous recombination, Metabolic pathways, Mismatch repair, Nucleotide excision repair, Purine metabolism, Pyrimidine metabolism

Product images:

Coomassie blue staining of purified POLD4 protein (Cat# [TP309992]). The protein was produced from HEK293T cells transfected with POLD4 cDNA clone (Cat# [RC209992]) using MegaTran 2.0 (Cat# [TT210002]).