

Product datasheet for PH309963

ATPAF1 (NM_022745) Human Mass Spec Standard

Product data:

Product Type:	Mass Spec Standards
Description:	ATPAF1 MS Standard C13 and N15-labeled recombinant protein (NP_073582)
Species:	Human
Expression Host:	HEK293
Expression cDNA Clone or AA Sequence:	RC209963
Predicted MW:	36.4 kDa
Protein Sequence:	>RC209963 protein sequence Red=Cloning site Green=Tags(s)

MAAVVVAAGGAGPAVLQVAGLYRGLCAVRSRALGLGLVSPAQLRVFPVPRPGSGRPEGGADGSGVGAEAE
LQANPFYDRYRDKIQLLRRSDPAAFESRLEKRSEFRKQPVGHSRQGDFIKCVEQKTDALGKQSVNRGFTK
DKTLSSIFNIEMVKEKTAEIWKIQQYFAAKDVTYAVIPAEEKFDLIWNRAQSCPTFLCALPRREGYEFF
VGQWTGTELHFTALINIQTRGEAAASQLILYHYPELKEEKGIVLMTAEMDSTFLNVAEAQCIAQVQLFY
ATDRKETYGLVETFNLRPNEFKYMSVIAELQSGLGAELKCAQNQNK

TRTRPLEQKLISEEDLAANDILDYKDDDDKV

Tag:	C-Myc/DDK
Purity:	> 80% as determined by SDS-PAGE and Coomassie blue staining
Concentration:	>0.05 µg/µL as determined by microplate BCA method
Labeling Method:	Labeled with [U- ¹³ C ₆ , ¹⁵ N ₄]-L-Arginine and [U- ¹³ C ₆ , ¹⁵ N ₂]-L-Lysine
Buffer:	25 mM Tris-HCl, 100 mM glycine, pH 7.3
Storage:	Store at -80°C. Avoid repeated freeze-thaw cycles.
Stability:	Stable for 3 months from receipt of products under proper storage and handling conditions.
RefSeq:	NP_073582
RefSeq Size:	1849
RefSeq ORF:	984
Synonyms:	ATP11; ATP11p
Locus ID:	64756



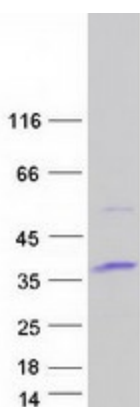
[View online »](#)

UniProt ID: [Q5TC12](#), [I3L448](#)

Cytogenetics: 1p33

Summary: This gene encodes an assembly factor for the F(1) component of the mitochondrial ATP synthase. This protein binds specifically to the F1 beta subunit and is thought to prevent this subunit from forming nonproductive homooligomers during enzyme assembly. Alternatively spliced transcript variants have been identified. [provided by RefSeq, Aug 2011]

Product images:



Coomassie blue staining of purified ATPAF1 protein (Cat# [TP309963]). The protein was produced from HEK293T cells transfected with ATPAF1 cDNA clone (Cat# [RC209963]) using MegaTran 2.0 (Cat# [TT210002]).