

Product datasheet for PH309941

LMOD1 (NM_012134) Human Mass Spec Standard

Product data:

Product Type:	Mass Spec Standards
Description:	LMOD1 MS Standard C13 and N15-labeled recombinant protein (NP_036266)
Species:	Human
Expression Host:	HEK293
Expression cDNA Clone or AA Sequence:	RC209941
Predicted MW:	66.8 kDa
Protein Sequence:	>RC209941 representing NM_012134 Red=Cloning site Green=Tags(s)

MSRVAKYRRQVSEDPDIDSLLETLSPEEMEELEKELDVVDPDGSVPVGLRQRNQTEKQSTGVYNREAMLN
FCEKETKLMQREMSMDESKQVETKTDANKGEERGRDASKKALGPRRSDLGKEPKRGGLKKSFSRDRDE
AGGKSGEKPKKEEKIIRGIDKGRVRAAVDKKEAGKDGRGEERAVATKKEEKKGSDRNTGLSRDKDKKREE
MKEVAKKEDDEKVKGERRNTDTRKEGEKMKRAGGNTDMKKEDEKVKRGTGNTDTKKDDEKVKKNEPLHEK
EAKDDSKTKTPEKQTPSGPTKPSGPAKVEEAAAPSIFFDEPLERVKNNDPEMTEVNVNNSDCITNEILVR
FTEALEFNTVVKLFALANTRADDHVAFIAIIMLKANKTITSLNLDNSNHITGKGILAIIFRALLQNNTLTEL
RFHNQRHICGGKTEMEIAKLLKENTTLKLGYPHFELAGPRMTVTNLLSRNMDKQRQKRLQEQRQAQEAAG
EKKDLLEVPKAGAVAKGSPKPSQPSPKNSPKKGGAPAAPPPPPPLAPPLIMENLNKNSLSPATQR
KMGDKVLP AQEKNSRDQLLAAIRSSNLKQLKKVEVPKLLQ

TRTRPLEQKLI SEEDLAANDILDYKDDDDKV

Tag:	C-Myc/DDK
Purity:	> 80% as determined by SDS-PAGE and Coomassie blue staining
Concentration:	>0.05 µg/µL as determined by microplate BCA method
Labeling Method:	Labeled with [U- 13C6, 15N4]-L-Arginine and [U- 13C6, 15N2]-L-Lysine
Buffer:	25 mM Tris-HCl, 100 mM glycine, pH 7.3
Storage:	Store at -80°C. Avoid repeated freeze-thaw cycles.
Stability:	Stable for 3 months from receipt of products under proper storage and handling conditions.
RefSeq:	NP_036266
RefSeq Size:	3967
RefSeq ORF:	1800



[View online »](#)

Synonyms: 1D; 64kD; D1; MMIHS3; SM-LMOD; SMLMOD

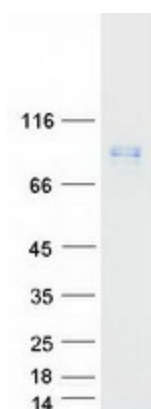
Locus ID: 25802

UniProt ID: [P29536](#)

Cytogenetics: 1q32.1

Summary: The leiomodoin 1 protein has a putative membrane-spanning region and 2 types of tandemly repeated blocks. The transcript is expressed in all tissues tested, with the highest levels in thyroid, eye muscle, skeletal muscle, and ovary. Increased expression of leiomodoin 1 may be linked to Graves' disease and thyroid-associated ophthalmopathy. [provided by RefSeq, Jul 2008]

Product images:



Coomassie blue staining of purified LMOD1 protein (Cat# [TP309941]). The protein was produced from HEK293T cells transfected with LMOD1 cDNA clone (Cat# [RC209941]) using MegaTran 2.0 (Cat# [TT210002]).