

Product datasheet for PH309939

GBP2 (NM_004120) Human Mass Spec Standard

Product data:

Product Type:	Mass Spec Standards
Description:	GBP2 MS Standard C13 and N15-labeled recombinant protein (NP_004111)
Species:	Human
Expression Host:	HEK293
Expression cDNA Clone or AA Sequence:	RC209939
Predicted MW:	67.2 kDa
Protein Sequence:	>RC209939 protein sequence Red=Cloning site Green=Tags(s)

MAPEINLPGMSLIDNTKGQLVVNPEALKILSAITQPVVVVAIVGLYRTGKSYLMNKLKAGKKNFSLGST
YKSHTKGIWMWCVPHPKPEHTLVLLDTEGLGDIKGNENDSWIFALAILLSSTFVYNSMGTINQQAMD
QLHYVTELTDRIKANSSPGNNSVDDSAFVSFFPAFVWTLRDFTLELEVDGEPITADDYLELSLKLKRG
DKKSKSFNDPRLCIRKFFPKRCFVFDWPAPKYLALHLEQLKEEELNPDFIEQVAEFCSYILSHSNVKT
SGGIPVNGPRLSLVLYVNAISSGDLPCRENAVLALAQIENSAAVEKAI AHYEQQMGQVQLPTETLQE
LLDLHRDSEREAIEVFMKNSFKDQVDFQRKLGALQLEARRDDFCQNSKASSDCCMALLQDIFGPLEEDV
KQGTFSKPGGYRLFTQKLQELKNKYYQVPRKGIQAKEVLKYLESKEDVADALLQTDQSLSEKEAIEVE
RIKAESAEAAKKMLEEIQKKNEMMEQKEKSYQEHVKQLTEKMERDRAQLMAEQEKTALALKLQEQRLLK
EGFENESKRLQKDIWDIQMRKSLEPICNIL

TRTRPLEQKLI SEEDLAANDILDYKDDDDKV

Tag:	C-Myc/DDK
Purity:	> 80% as determined by SDS-PAGE and Coomassie blue staining
Concentration:	>0.05 µg/µL as determined by microplate BCA method
Labeling Method:	Labeled with [U- ¹³ C ₆ , ¹⁵ N ₄]-L-Arginine and [U- ¹³ C ₆ , ¹⁵ N ₂]-L-Lysine
Buffer:	25 mM Tris-HCl, 100 mM glycine, pH 7.3
Storage:	Store at -80°C. Avoid repeated freeze-thaw cycles.
Stability:	Stable for 3 months from receipt of products under proper storage and handling conditions.
RefSeq:	NP_004111
RefSeq Size:	4148
RefSeq ORF:	1773



[View online »](#)

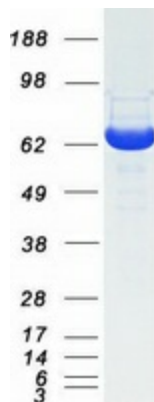
Locus ID: 2634

UniProt ID: [P32456](#), [Q8TCE5](#)

Cytogenetics: 1p22.2

Summary: This gene belongs to the guanine-binding protein (GBP) family, which includes interferon-induced proteins that can bind to guanine nucleotides (GMP, GDP and GTP). The encoded protein is a GTPase which hydrolyzes GTP, predominantly to GDP. The protein may play a role as a marker of squamous cell carcinomas. [provided by RefSeq, Jul 2013]

Product images:



Coomassie blue staining of purified GBP2 protein (Cat# [TP309939]). The protein was produced from HEK293T cells transfected with GBP2 cDNA clone (Cat# [RC209939]) using MegaTran 2.0 (Cat# [TT210002]).