

Product datasheet for PH309927

RAB1B (NM_030981) Human Mass Spec Standard

Product data:

Product Type:	Mass Spec Standards
Description:	RAB1B MS Standard C13 and N15-labeled recombinant protein (NP_112243)
Species:	Human
Expression Host:	HEK293
Expression cDNA Clone or AA Sequence:	RC209927
Predicted MW:	22.2 kDa
Protein Sequence:	>RC209927 protein sequence Red=Cloning site Green=Tags(s) MNPEYDYLFKLLLIIGDSGVGKSCLLRFADDTYTESYISTIGVDFKIRTIELDGKTIKQLIWDTAGQERF RTITSSYYRGAHGIIVVYDVTDQESYANVKQWLQEIDRYASENVNKLVLGNKSDLTTKKVVDNTTAKFA DSLGIPLFLETSAKNATNVEQAFMTMAAEIKKRMGPGAASGGERPNLKIDSTPKPAGGGCC TRTRPLEQKLISEEDLAANDILDYKDDDDKV
Tag:	C-Myc/DDK
Purity:	> 80% as determined by SDS-PAGE and Coomassie blue staining
Concentration:	>0.05 µg/µL as determined by microplate BCA method
Labeling Method:	Labeled with [U- ¹³ C ₆ , ¹⁵ N ₄]-L-Arginine and [U- ¹³ C ₆ , ¹⁵ N ₂]-L-Lysine
Buffer:	25 mM Tris-HCl, 100 mM glycine, pH 7.3
Storage:	Store at -80°C. Avoid repeated freeze-thaw cycles.
Stability:	Stable for 3 months from receipt of products under proper storage and handling conditions.
RefSeq:	NP_112243
RefSeq Size:	1955
RefSeq ORF:	603
Locus ID:	81876
UniProt ID:	Q9H0U4
Cytogenetics:	11q13.2



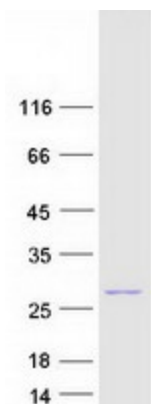
[View online »](#)

Summary:

Members of the RAB protein family, such as RAB1B, are low molecular mass monomeric GTPases localized on the cytoplasmic surfaces of distinct membrane-bound organelles. RAB1B functions in the early secretory pathway and is essential for vesicle transport between the endoplasmic reticulum (ER) and Golgi (Chen et al., 1997 [PubMed 9030196]; Alvarez et al., 2003 [PubMed 12802079]).[supplied by OMIM, Jan 2009]

Protein Families:

Transcription Factors

Product images:

Coomassie blue staining of purified RAB1B protein (Cat# [TP309927]). The protein was produced from HEK293T cells transfected with RAB1B cDNA clone (Cat# [RC209927]) using MegaTran 2.0 (Cat# [TT210002]).