

Product datasheet for PH309916

RETREG1 (NM_019000) Human Mass Spec Standard

Product data:

Product Type:	Mass Spec Standards
Description:	FAM134B MS Standard C13 and N15-labeled recombinant protein (NP_061873)
Species:	Human
Expression Host:	HEK293
Expression cDNA Clone or AA Sequence:	RC209916
Predicted MW:	39.3 kDa
Protein Sequence:	>RC209916 protein sequence Red=Cloning site Green=Tags(s)
	MPEGEDFGPGKSWEVINSKPDERPRLSHCIAESWMNFSIFLQEMSLFKQQSPGKFCLLVCSVCTFFFTILG SYIPGVILSYLLLLCAFLCPLFKCNDIGQKIYSKIKSVLLKLDGIGEYINQKKRERSEADKEKSHKDDS ELDFSALCPKISLTVAAKELSVSDTDVSEVSWTDNGTFNLSEGYTPQTDTSDDLDRPSEEVSRLSDFP SLENGMGTNDEDELSLGLPTTELKRKKEQLDSGHRPSKETQSAAGLTLPLNSDQTFHLMNSLAGDVITAAV TAAIKDQLEGVQQALSQAAPIPEEDTDTEEGDDFELLDQSELDQIESELGLTQDQEAQAQNKSSGFLS NLLGGH
	TRTRPLEQKLISEEDLAANDILDYKDDDDKV
Tag:	C-Myc/DDK
Purity:	> 80% as determined by SDS-PAGE and Coomassie blue staining
Concentration:	>0.05 µg/µL as determined by microplate BCA method
Labeling Method:	Labeled with [U- ¹³ C ₆ , ¹⁵ N ₄]-L-Arginine and [U- ¹³ C ₆ , ¹⁵ N ₂]-L-Lysine
Buffer:	25 mM Tris-HCl, 100 mM glycine, pH 7.3
Storage:	Store at -80°C. Avoid repeated freeze-thaw cycles.
Stability:	Stable for 3 months from receipt of products under proper storage and handling conditions.
RefSeq:	<u>NP_061873</u>
RefSeq Size:	3184
RefSeq ORF:	1068
Synonyms:	FAM134B; JK-1; JK1
Locus ID:	54463



[View online »](#)

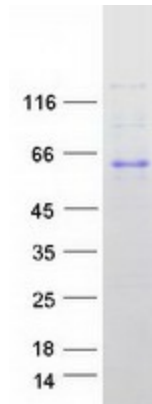
UniProt ID: [Q9H6L5](#)

Cytogenetics: 5p15.1

Summary: The protein encoded by this gene is a cis-Golgi transmembrane protein that may be necessary for the long-term survival of nociceptive and autonomic ganglion neurons. Mutations in this gene are a cause of hereditary sensory and autonomic neuropathy type IIB (HSAN IIB), and this gene may also play a role in susceptibility to vascular dementia. Alternatively spliced transcript variants encoding multiple isoforms have been observed for this gene. [provided by RefSeq, Nov 2011]

Protein Families: Transmembrane

Product images:



Coomassie blue staining of purified RETREG1 protein (Cat# [TP309916]). The protein was produced from HEK293T cells transfected with RETREG1 cDNA clone (Cat# [RC209916]) using MegaTran 2.0 (Cat# [TT210002]).