

Product datasheet for PH309858

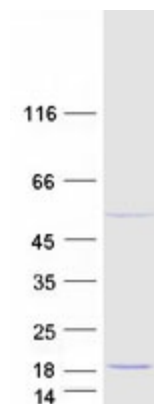
C22orf40 (CDPF1) (NM_207327) Human Mass Spec Standard

Product data:

Product Type:	Mass Spec Standards
Description:	C22orf40 MS Standard C13 and N15-labeled recombinant protein (NP_997210)
Species:	Human
Expression Host:	HEK293
Expression cDNA Clone or AA Sequence:	RC209858
Predicted MW:	13.9 kDa
Protein Sequence:	<p>>RC209858 protein sequence</p> <p>Red=Cloning site Green=Tags(s)</p> <p>MASHVECRPLGVFECELCTLTAPYSYVGQKPPNTQSMVLLEESYVMKDPFTSDKDRFLVLGSCCSLCSRL VCVGPECSLFYSKRFCLPCVRENINAFQEIQRDLEKRKAPSKRTPSQPGSRT</p> <p>TRTRPLEQKLISEEDLAANDILDYKDDDDKV</p>
Tag:	C-Myc/DDK
Purity:	> 80% as determined by SDS-PAGE and Coomassie blue staining
Concentration:	>0.05 µg/µL as determined by microplate BCA method
Labeling Method:	Labeled with [U- 13C6, 15N4]-L-Arginine and [U- 13C6, 15N2]-L-Lysine
Buffer:	25 mM Tris-HCl, 100 mM glycine, pH 7.3
Storage:	Store at -80°C. Avoid repeated freeze-thaw cycles.
Stability:	Stable for 3 months from receipt of products under proper storage and handling conditions.
RefSeq:	NP_997210
RefSeq Size:	1502
RefSeq ORF:	369
Synonyms:	C22orf40
Locus ID:	150383
UniProt ID:	Q6NVV7
Cytogenetics:	22q13.31


[View online »](#)

Product images:



Coomassie blue staining of purified CDPF1 protein (Cat# [TP309858]). The protein was produced from HEK293T cells transfected with CDPF1 cDNA clone (Cat# [RC209858]) using MegaTran 2.0 (Cat# [TT210002]).