

Product datasheet for PH309857

CPSF2 (NM_017437) Human Mass Spec Standard

Product data:

Product Type:	Mass Spec Standards
Description:	CPSF2 MS Standard C13 and N15-labeled recombinant protein (NP_059133)
Species:	Human
Expression Host:	HEK293
Expression cDNA Clone or AA Sequence:	RC209857
Predicted MW:	88.5 kDa
Protein Sequence:	>RC209857 protein sequence Red=Cloning site Green=Tags(s)

MTSIIKLTTLSGVQEEALCYLLQVDEFRLFLLDCGWDEHFSMDIIDSLRKHVHQIDAVLLSHPDPLHLGALPYAVGKLGLENCAIYATIPVYKMGQMFMYDLYQSRHNTEDFTLFTLDDVDAAFDKIQQLKFSQIVNLKKGKGHGLSITPLPAGHMIGGTIWKIVKDGEIEIVYAVDFNHKREIHLNGCSLEMLSRPSLLITDSFNATYVQP RRKQRDEQLLTNVLETLRGDGNVLI AVDTAGRVLELAQLLDQIWRTKDAGLVVSLALLNNVSYNVVEFSKSQVEWMSGKLMRCFEDKRNNPFQFRHLSLCHGLSDLARVPSPKVVLASQPDLECGFSRDLFIQWCQDPK NSIILTYRTPGTARFLIDNPSEKITEIELRKRVKLEGKELEEYLEKEKLLKKEAAKKLEQSKEADIDSS DESDIEEDIDQPSAHKTKHDLMMKGEGRKGSFFKQAKKSYPMFPAPEERIKWDEYGEIIPKPEDFLVPEL QATEEEESKLESGLTNGDEPMDQDLSDVPTKCI STTESIEIKARVYIDYEGRSDGDSIKKIINQMKPRQ LIIVHGPPPEASQDLAECRAFGGKDIKVVMPKLHETVDATSETHIYQVRLKDSLVSLSLQFCKAKDAELAW IDGVLDMRVSKYDGTGVILEEGELRDDGDESEMQVEAPSDSSVIAQQKAMKSLFGDDEKETGEESEI IPTL EPLPPHEVPGHQSVFMNEPRLSDFKQVLLREGIQAEFVGGVLCVNNQVAVRRTETGRIGLEGCLCQDFYR IRDLLYEQYAIIV

TRTRPLEQKLI SEEDLAANDILDYKDDDDKV

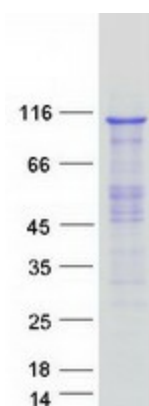
Tag:	C-Myc/DDK
Purity:	> 80% as determined by SDS-PAGE and Coomassie blue staining
Concentration:	>0.05 µg/µL as determined by microplate BCA method
Labeling Method:	Labeled with [U- ¹³ C ₆ , ¹⁵ N ₄]-L-Arginine and [U- ¹³ C ₆ , ¹⁵ N ₂]-L-Lysine
Buffer:	25 mM Tris-HCl, 100 mM glycine, pH 7.3
Storage:	Store at -80°C. Avoid repeated freeze-thaw cycles.
Stability:	Stable for 3 months from receipt of products under proper storage and handling conditions.
RefSeq:	NP_059133



[View online »](#)

RefSeq Size:	5072
RefSeq ORF:	2346
Synonyms:	CPSF100
Locus ID:	53981
UniProt ID:	Q9P2I0 , A0A024R6H0
Cytogenetics:	14q32.12
Summary:	Component of the cleavage and polyadenylation specificity factor (CPSF) complex that play a key role in pre-mRNA 3'-end formation, recognizing the AAUAAA signal sequence and interacting with poly(A) polymerase and other factors to bring about cleavage and poly(A) addition. Involved in the histone 3' end pre-mRNA processing.[UniProtKB/Swiss-Prot Function]

Product images:



Coomassie blue staining of purified CPSF2 protein (Cat# [TP309857]). The protein was produced from HEK293T cells transfected with CPSF2 cDNA clone (Cat# [RC209857]) using MegaTran 2.0 (Cat# [TT210002]).