

## Product datasheet for PH309831

### LRR32 (NM\_005512) Human Mass Spec Standard

#### Product data:

Product Type:	Mass Spec Standards
Description:	LRR32 MS Standard C13 and N15-labeled recombinant protein (NP_005503)
Species:	Human
Expression Host:	HEK293
Expression cDNA Clone or AA Sequence:	RC209831
Predicted MW:	72 kDa
Protein Sequence:	>RC209831 protein sequence Red=Cloning site Green=Tags(s)

MRPQILLLLALLTLGLAAQHQDKVPCKMVDKVKVSCQVLGLLQVPSVLPDPTETLDLSGNQLRISILASPLG  
FYTALRHLDLSTNEISFLQPGAFQALHLEHLSLAHNRLAMATALSAGGLGPLPRVTSLDLGSNSLYSGL  
LERLLGEAPSLHTLSLAENSLTRLTRHTFRDMPALEQLDLHSNVLMDIEDGAFEGLPRLTHLNLRSNLSL  
CISDFSLQQLRVLDLSCNSIEAFQTASQPQAEFQLTWDLRENKLLHFPDLAALPRLIYLNLSNNLIRLP  
TGPPQDSKGIHAPSEGWSALPLSAPSGNASGRPLSOLLNLDL SYNEIELIPDSFLEHLTSLCFLNLSRNC  
LRTFEARRLGSLPCLMLLDL SHNALETLELGARALGSLRLLLLQGNALRDLPPYTFANLASLQRLNLQGN  
RVSPCGGPDEPGPSGCVAFSGITSLRSLVDNEIELLRAGAFHTPLTELDLSSNPGLEVATGALGGLE  
ASLEVLALQGNLMVLQVDLPCFICLKRLNLAENRSLHLPAAWTQAVSLEVLDRNNSFLLPGSAMGGLE  
TSLRRLYLQGNPLSCCGNGLAAQLHQGRVDVDTQDLICRFSSQEEVSLSHVRPEDCEKGLKNINLII  
ILTFILVSAILLTTLAACCVRQRQKFNQYKA

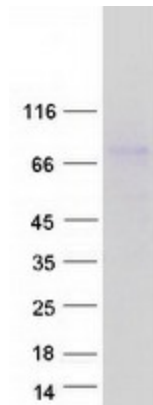
SGPTRTRPLEQKLI SEEDLAANDILDYKDDDDKV

Tag:	C-Myc/DDK
Purity:	> 80% as determined by SDS-PAGE and Coomassie blue staining
Concentration:	>0.05 µg/µL as determined by microplate BCA method
Labeling Method:	Labeled with [U- 13C6, 15N4]-L-Arginine and [U- 13C6, 15N2]-L-Lysine
Buffer:	25 mM Tris-HCl, 100 mM glycine, pH 7.3
Storage:	Store at -80°C. Avoid repeated freeze-thaw cycles.
Stability:	Stable for 3 months from receipt of products under proper storage and handling conditions.
RefSeq:	<a href="#">NP_005503</a>
RefSeq Size:	4327



[View online »](#)

RefSeq ORF:	1986
Synonyms:	CPPRDD; D11S833E; GARP
Locus ID:	2615
UniProt ID:	<a href="#">Q14392</a> , <a href="#">A0A024R5J7</a>
Cytogenetics:	11q13.5
Summary:	This gene encodes a type I membrane protein which contains 20 leucine-rich repeats. Alterations in the chromosomal region 11q13-11q14 are involved in several pathologies. [provided by RefSeq, Jul 2008]
Protein Families:	Transmembrane

**Product images:**

Coomassie blue staining of purified LRRC32 protein (Cat# [TP309831]). The protein was produced from HEK293T cells transfected with LRRC32 cDNA clone (Cat# [RC209831]) using MegaTran 2.0 (Cat# [TT210002]).