

Product datasheet for PH309822

CD62P (SELP) (NM_003005) Human Mass Spec Standard

Product data:

Product Type:	Mass Spec Standards
Description:	SELP MS Standard C13 and N15-labeled recombinant protein (NP_002996)
Species:	Human
Expression Host:	HEK293
Expression cDNA Clone or AA Sequence:	RC209822
Predicted MW:	90.8 kDa
Protein Sequence:	>RC209822 protein sequence Red=Cloning site Green=Tags(s)
	<p>MANCQIAILYQRFQRVVFGISQLLCSALISELTNQKEVAAWTYHYSTKAYSWNI SRKYCQNR YTDLVAI QNKNEIDYLNKVLPPYSSYYWIGIRKNNKTWTWVGTKKALTNEAENWADNEPNNKRNNEDCVEIYIKSPS APGKWDEHCLKKHALCYTASCQDMSCSKQGECLLETIGNYTCSCYPGFGPECEYVRECGELELPQHVL MNC SHPLGNFSFNSQCSFHCTDGYVNGSPKLECLASGIWTKNPPQCLAAQCPPLKIPERGNMTC LHS AK AFQHQS SCSFSCEE GFALVGPEVVQCTASGVWTAPAPVCKAVQCQHLEAPSEGTMDCVHPLTAFAYGSSC KFECQPGYRVRGLDMLRCIDSGHWSAPLPTCEAISCEPLESPVHGSMDCSPSLRAFQYDTNCSFRCAEGF MLRGADIVRCDNLGQWTAPAPVCQALQCQDLVPNEARVNC SHPF GAFRYQSVCSFTCNEGLLLVGASVL QCLATGNWNSVPPECQAIPCTPLLSPQNGTMTCVRPLGSSSYKSTCQFICDEGYSLSGPERLDCTRSGRW TDSPPMCEAIKCPFLFAPEQGS LDCSDTRGEFNVGSTCHFSCNNGFKLEGPNNVECTTSGRWSATPPTCK GIASLPTPGVQCPAL TTPGQGTMYCRHHPGTGFNTTCYFGC NAGFTLIGDSTLSCRPSGQWTA VTPACR AVKCESELHVNKPIAMNCSNLWGNFSYGSICSFHLEGLQLLNGSAQTACQENHWSTTVPTCQGPLTIQEA LTYFGGAVASTIGLIMGGTLLALLRKRFRQKDDGKCLPNPHSHLGT YGVFTNAAFDPSP</p> <p>TRTRPLEQKLI SEEDLAANDILDYKDDDDKV</p>
Tag:	C-Myc/DDK
Purity:	> 80% as determined by SDS-PAGE and Coomassie blue staining
Concentration:	>0.05 µg/µL as determined by microplate BCA method
Labeling Method:	Labeled with [U- ¹³ C ₆ , ¹⁵ N ₄]-L-Arginine and [U- ¹³ C ₆ , ¹⁵ N ₂]-L-Lysine
Buffer:	25 mM Tris-HCl, 100 mM glycine, pH 7.3
Storage:	Store at -80°C. Avoid repeated freeze-thaw cycles.
Stability:	Stable for 3 months from receipt of products under proper storage and handling conditions.
RefSeq:	NP_002996



[View online »](#)

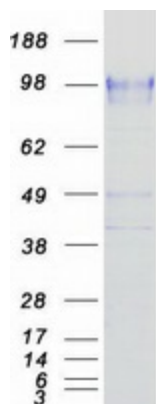
RefSeq Size:	3185
RefSeq ORF:	2487
Synonyms:	CD62; CD62P; GMP140; GRMP; LECAM3; PADGEM; PSEL
Locus ID:	6403
UniProt ID:	P16109 , A0A024R8Y9 , Q6NUL9
Cytogenetics:	1q24.2

Summary: This gene encodes a 140 kDa protein that is stored in the alpha-granules of platelets and Weibel-Palade bodies of endothelial cells. This protein redistributes to the plasma membrane during platelet activation and degranulation and mediates the interaction of activated endothelial cells or platelets with leukocytes. The membrane protein is a calcium-dependent receptor that binds to sialylated forms of Lewis blood group carbohydrate antigens on neutrophils and monocytes. Alternative splice variants may occur but are not well documented. [provided by RefSeq, Jul 2008]

Protein Families: Druggable Genome, ES Cell Differentiation/IPS, Transmembrane

Protein Pathways: Cell adhesion molecules (CAMs)

Product images:



Coomassie blue staining of purified SELP protein (Cat# [TP309822]). The protein was produced from HEK293T cells transfected with SELP cDNA clone (Cat# [RC209822]) using MegaTran 2.0 (Cat# [TT210002]).