

Product datasheet for PH309816

DNA Polymerase lambda (POLL) (NM_013274) Human Mass Spec Standard

Product data:

Product Type:	Mass Spec Standards
Description:	POLL MS Standard C13 and N15-labeled recombinant protein (NP_037406)
Species:	Human
Expression Host:	HEK293
Expression cDNA Clone or AA Sequence:	RC209816
Predicted MW:	63.4 kDa
Protein Sequence:	>RC209816 protein sequence Red=Cloning site Green=Tags(s)

MDPRGILKAFPKRQKIHADASSKVLAKIPRREEGEEAEEWLSSLRAHVVRTGIGRARAELFEKQIVQHGG
QLCPAQGPGVTHIVVDEGMDYERALLRLLPQLPPGAQLVKSASLSLCLQERRLVDVAGFSIFIPSRYL
HPQPSKAEQDASIPPGTHEALLQTALSPPPPTRPVSPQKAKEAPNTQAQPISSDDEASDGEETQVSAAD
LEALISGHYPTSLEGDCEPSPAPAVLDKWWCAQPSSQKATNHNHHITEKLEVLAKAYSVQGDKWRALGYA
KAINALKSFHKPVTSYQGACSIPIGIGKMAEKIIEIILESGHLRKLHDHISESVPVLELFSNIWGAGTKTAQ
MWWYQQGFRSLEDIRSQASLTTQQAIGLKHYSDFLERMPREEATEIEQTVQKAAQAFNSGLLCVACGSYRR
GKATCGDVDVLI THPDGRSHRGIFSRLLDSL RQEGFLTDDLVSQEENGQQQKYLGVCR L PGPGRRHRLD
IIVVPYSEFACALLYFTGSAHFNRSMRALAKTKGMSLSEHALSTAVVRNTHGCKVGPGRVLPPTTEKDV
F RLLGLPYREPAERDW

TRTRPLEQKLISEEDLAANDILDYKDDDDKV

Tag:	C-Myc/DDK
Purity:	> 80% as determined by SDS-PAGE and Coomassie blue staining
Concentration:	>0.05 µg/µL as determined by microplate BCA method
Labeling Method:	Labeled with [U- ¹³ C ₆ , ¹⁵ N ₄]-L-Arginine and [U- ¹³ C ₆ , ¹⁵ N ₂]-L-Lysine
Buffer:	25 mM Tris-HCl, 100 mM glycine, pH 7.3
Storage:	Store at -80°C. Avoid repeated freeze-thaw cycles.
Stability:	Stable for 3 months from receipt of products under proper storage and handling conditions.
RefSeq:	NP_037406
RefSeq Size:	2741
RefSeq ORF:	1725



[View online »](#)

Synonyms: BETAN; POLKAPPA

Locus ID: 27343

UniProt ID: [Q9UGP5](#)

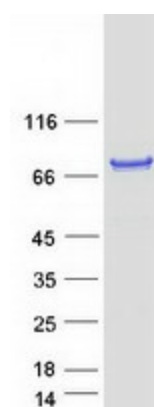
Cytogenetics: 10q24.32

Summary: This gene encodes a DNA polymerase. DNA polymerases catalyze DNA-template-directed extension of the 3'-end of a DNA strand. This particular polymerase, which is a member of the X family of DNA polymerases, likely plays a role in non-homologous end joining and other DNA repair processes. Alternatively spliced transcript variants have been described. [provided by RefSeq, Mar 2010]

Protein Families: Druggable Genome

Protein Pathways: Base excision repair, Non-homologous end-joining

Product images:



Coomassie blue staining of purified POLL protein (Cat# [TP309816]). The protein was produced from HEK293T cells transfected with POLL cDNA clone (Cat# [RC209816]) using MegaTran 2.0 (Cat# [TT210002]).