

## Product datasheet for PH309790

### TMEM35 (TMEM35A) (NM\_021637) Human Mass Spec Standard

#### Product data:

Product Type:	Mass Spec Standards
Description:	TMEM35 MS Standard C13 and N15-labeled recombinant protein (NP_067650)
Species:	Human
Expression Host:	HEK293
Expression cDNA Clone or AA Sequence:	RC209790
Predicted MW:	18.4 kDa
Protein Sequence:	>RC209790 protein sequence Red=Cloning site Green=Tags(s)  MASPRTVTIVALSVLGLFFVFMGTIKLTPRLSKDAYSEMCRAYKSYVRALPLLKMGINSILLRKSIGA LEVACGI VMTLV PGRPKDVANFFLLLLVLAVLFFHQLVGDPLKRYAHALVFGILLTCRLLIARKPEDRSS EKKPLPGNAEEQPSLYEKAPQGKVKVS  TRTRPLEQKLI SEEDLAANDILDYKDDDDKV
Tag:	C-Myc/DDK
Purity:	> 80% as determined by SDS-PAGE and Coomassie blue staining
Concentration:	>0.05 µg/µL as determined by microplate BCA method
Labeling Method:	Labeled with [U- <sup>13</sup> C <sub>6</sub> , <sup>15</sup> N <sub>4</sub> ]-L-Arginine and [U- <sup>13</sup> C <sub>6</sub> , <sup>15</sup> N <sub>2</sub> ]-L-Lysine
Buffer:	25 mM Tris-HCl, 100 mM glycine, pH 7.3
Storage:	Store at -80°C. Avoid repeated freeze-thaw cycles.
Stability:	Stable for 3 months from receipt of products under proper storage and handling conditions.
RefSeq:	<a href="#">NP_067650</a>
RefSeq Size:	2086
RefSeq ORF:	501
Synonyms:	NACHO; TMEM35; TUF-1
Locus ID:	59353
UniProt ID:	<a href="#">Q53FP2</a>



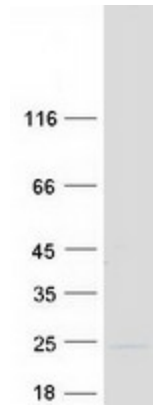
[View online »](#)

Cytogenetics: Xq22.1

Summary: A soluble peptide released by shedding may interact with NGFR and modulate neurite outgrowth.[UniProtKB/Swiss-Prot Function]

Protein Families: Transmembrane

### Product images:



Coomassie blue staining of purified TMEM35A protein (Cat# [TP309790]). The protein was produced from HEK293T cells transfected with TMEM35A cDNA clone (Cat# [RC209790]) using MegaTran 2.0 (Cat# [TT210002]).