

Product datasheet for PH309779

LSG1 (NM_018385) Human Mass Spec Standard

Product data:

Product Type:	Mass Spec Standards
Description:	LSG1 MS Standard C13 and N15-labeled recombinant protein (NP_060855)
Species:	Human
Expression Host:	HEK293
Expression cDNA Clone or AA Sequence:	RC209779
Predicted MW:	75.2 kDa
Protein Sequence:	>RC209779 protein sequence Red=Cloning site Green=Tags(s)

MGRRRAPAGGSLGRALMRHQTRSRSHRHTD SWLHTSELNDGYDWGRLNLQSVTEQSSLDFFLATAELAG
TEFVAEKLNIKFPVPAEARTGLLSFEESQRIKKLHEENKQFLCIPRRPNWNQNTTPEELKQAEKDNFLEWR
RQLVRLLEEELILTPFERNLDFWRQLWRVIERSDIVVQIVDARNPLLFRCEDLECYVKEMDANKENVIL
INKADLLTAEQRSAWAMYFEKEDVKVIFWSALAGAIPLNGDSEEEANRDDRQSNTEFGHSSFDQAEISH
SESEHLPARDSPSLSENPTTDEDDSEYEDCPEEEEDDWQTCSEEDGPKKEEDCSQDWKESSTADSEARSRK
TPQKRQIHNFSHLVSKQELLELFKELHTGRKVKDQGLTVGLVGYPNVGKSSSTINTIMGNKVSVSATPGH
TKHFQTLVVEPGLCLCDCPGLVMPFVSTKAEMTCSGILPIDQMRDHVPPVSLVCQNIIPRHVLEATYGIN
IITPREDEDPHRPPTSEELLTAYGYMRGFMTAHGQPDQPRARYILKDYVSGKLLYCHPPPGRDPVTFQH
QHQRLLLENKMNSDEIKMQLGRNKKAKQIENIVDKTFHQQENVRALTKGVQAVMGYKPGSGVVTAASSE
NGAGKPWKKHGNRNKKEKSRRLYKHLDM

TRTRPLEQKLI SEEDLAANDILDYKDDDDKV

Tag:	C-Myc/DDK
Purity:	> 80% as determined by SDS-PAGE and Coomassie blue staining
Concentration:	>0.05 µg/µL as determined by microplate BCA method
Labeling Method:	Labeled with [U- 13C6, 15N4]-L-Arginine and [U- 13C6, 15N2]-L-Lysine
Buffer:	25 mM Tris-HCl, 100 mM glycine, pH 7.3
Storage:	Store at -80°C. Avoid repeated freeze-thaw cycles.
Stability:	Stable for 3 months from receipt of products under proper storage and handling conditions.
RefSeq:	NP_060855
RefSeq Size:	3589



[View online »](#)

RefSeq ORF: 1974

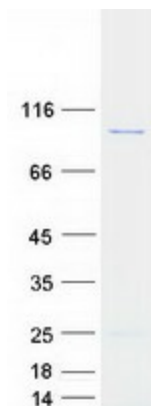
Locus ID: 55341

UniProt ID: [Q9H089](#)

Cytogenetics: 3q29

Summary: This gene encodes a protein related to the yeast large subunit GTPase 1. The encoded protein is necessary for cell viability and may localize in the endoplasmic reticulum, nucleus and cytoplasm.[provided by RefSeq, Feb 2009]

Product images:



Coomassie blue staining of purified LSG1 protein (Cat# [TP309779]). The protein was produced from HEK293T cells transfected with LSG1 cDNA clone (Cat# [RC209779]) using MegaTran 2.0 (Cat# [TT210002]).