

Product datasheet for PH309766

LRP15 (LRRC3B) (NM_052953) Human Mass Spec Standard

Product data:

Product Type:	Mass Spec Standards
Description:	LRRC3B MS Standard C13 and N15-labeled recombinant protein (NP_443185)
Species:	Human
Expression Host:	HEK293
Expression cDNA Clone or AA Sequence:	RC209766
Predicted MW:	29.3 kDa
Protein Sequence:	>RC209766 protein sequence Red=Cloning site Green=Tags(s) MNLVDLWLTRSLSMCLLLQSFVLMILCFHSASMCPKGCLCSSSGGLNVTCSNANLKEIPRDLPPETVLLY LDSNQITSIPNEIFKDLHQLRVLNLSKNGIEFIDEHAFKGAETLQTLDSLSDNRIQSVHKNAFNLLKARA RIANNPWHCDCTLQQVLRSMASNHETAHVICKTSVLDEHAGRPFNAANDADLCNLPKKTDDYAMLVTM FGWFTMVISYVVVYVRQNQEDARRHLEYLKSLSRQKKADEPDDISTVV TRTRPLEQKLI SEEDLAANDILDYKDDDDKV
Tag:	C-Myc/DDK
Purity:	> 80% as determined by SDS-PAGE and Coomassie blue staining
Concentration:	>0.05 µg/µL as determined by microplate BCA method
Labeling Method:	Labeled with [U- ¹³ C ₆ , ¹⁵ N ₄]-L-Arginine and [U- ¹³ C ₆ , ¹⁵ N ₂]-L-Lysine
Buffer:	25 mM Tris-HCl, 100 mM glycine, pH 7.3
Storage:	Store at -80°C. Avoid repeated freeze-thaw cycles.
Stability:	Stable for 3 months from receipt of products under proper storage and handling conditions.
RefSeq:	NP_443185
RefSeq Size:	1718
RefSeq ORF:	777
Synonyms:	LRP15
Locus ID:	116135
UniProt ID:	Q96PB8 , A1LNH5



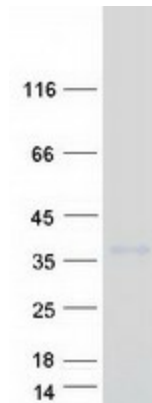
[View online »](#)

Cytogenetics: 3p24.1

Summary: The protein encoded by this gene is a tumor suppressor, with lowered expression levels found in gastric, renal, colorectal, lung, and breast cancer tissues. The promoter of this gene is frequently hypermethylated in these cancer tissues, although the hypermethylation does not appear to be the cause of the reduced expression of this gene. Several transcript variants encoding the same protein have been found for this gene. [provided by RefSeq, Dec 2015]

Protein Families: Transmembrane

Product images:



Coomassie blue staining of purified LRRC3B protein (Cat# [TP309766]). The protein was produced from HEK293T cells transfected with LRRC3B cDNA clone (Cat# [RC209766]) using MegaTran 2.0 (Cat# [TT210002]).